

## FITC Anti-Human CD279 (PD1) Antibody

|                           |                     |
|---------------------------|---------------------|
| <b>Catalog Number:</b>    | 101411, 101412      |
| <b>Size:</b>              | 25 tests, 100 tests |
| <b>Target Name:</b>       | CD279, PD1, PD-1    |
| <b>Regulatory Status:</b> | RUO                 |

### PRODUCT DETAILS

---

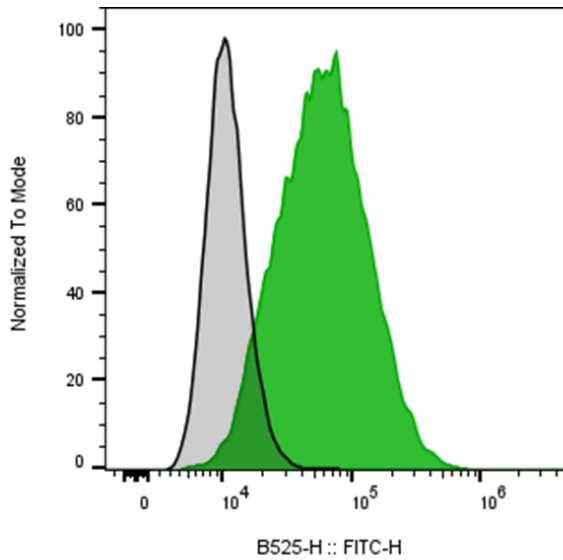
|                               |  |
|-------------------------------|--|
| <b>Clone:</b>                 | 279AM1   |
| <b>Application:</b>           | Flow Cytometry   |
| <b>Reactivity:</b>            | Human  |
| <b>Format:</b>                | FITC   |
| <b>Isotype:</b>               | Mouse IgG1   |
| <b>Antibody Type:</b>         | Monoclonal   |
| <b>Formulation:</b>           | Phosphate-buffered solution, pH 7.2, containing 0.09% sodium azide and 0.2% (w/v) BSA  |
| <b>Protein Concentration:</b> | Supplied at a lot-specific concentration.  |
| <b>Storage&amp;Handling:</b>  | The antibody solution should be stored undiluted between 2°C and 8°C, and protected from prolonged exposure to light. Do not freeze.   |
| <b>Recommended Usage:</b>     | For flow cytometric staining, it is recommended to use 5 uL of this reagent per 0.5-1.0 million cells in a 100 µL volume. Optimal reagent performance should be determined by titration for each specific application. |
| <b>Excitation Laser:</b>      | Blue Laser (488 nm)  |

### BACKGROUND INFORMATION

---

CD279, also known as Programmed cell death 1 (PD-1), cell surface receptor which binds to PD-L1 and PD-L2 ligands; functions as immune checkpoint with important role in down regulating immune system by preventing T-cell activation. Targeted by Nivolumab, Pembrolizumab and other monoclonal antibodies in a new class of cancer drugs. CD279 is expressed predominantly on activated T cells, B cells, and myeloid cells. The interaction with CD279 ligands results in inhibition of T cell proliferation and cytokine secretion.

## PRODUCT DATA



Human peripheral blood lymphocytes stimulated with plate-coated anti-Human CD3 and CD28 for 3 days was stained with FITC Anti-Human CD279 clone 279AM1 (color-filled histogram) or an isotype control (gray histogram). Cells were treated with Fc block prior to the antibody staining.

This product is supplied subject to the terms and conditions at [www.innocyto.com/web/terms.php](http://www.innocyto.com/web/terms.php) and may only be used as provided in the stated terms. Products are for Research Use Only.