

FITC Anti-Human CD63 Antibody

Catalog Number:	106411, 106412
Size:	25 tests, 100 tests
Target Name:	CD63, LIMP, LAMP-3, Melanoma-associated antigen (ME491), Pltgp40, gp55
Regulatory Status:	RUO

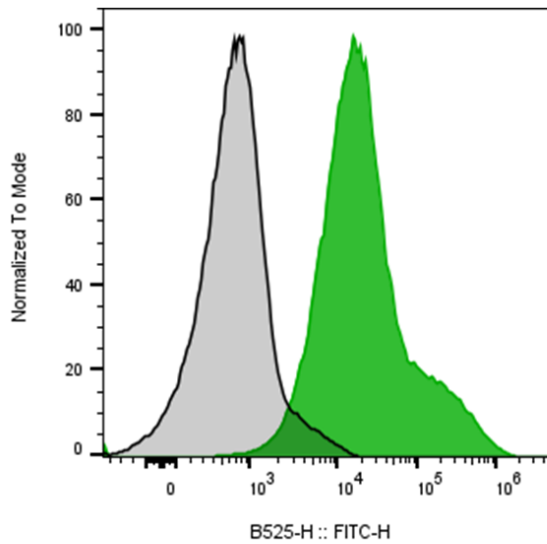
PRODUCT DETAILS

Clone:	H5C6
Application:	Flow Cytometry
Reactivity:	Human
Format:	FITC
Isotype:	Mouse IgG1
Antibody Type:	Monoclonal
Formulation:	Phosphate-buffered solution, pH 7.2, containing 0.09% sodium azide and 0.2% (w/v) BSA
Protein Concentration:	Supplied at a lot-specific concentration.
Storage&Handling:	The antibody solution should be stored undiluted between 2°C and 8°C, and protected from prolonged exposure to light. Do not freeze.
Recommended Usage:	For flow cytometric staining, it is recommended to use 5 uL of this reagent per 0.5-1.0 million cells in a 100 µL volume. Optimal reagent performance should be determined by titration for each specific application.
Excitation Laser:	Blue Laser (488 nm)

BACKGROUND INFORMATION

CD63 antigen is a protein that, in humans, is encoded by the CD63 gene. The protein encoded by this gene is a member of the transmembrane 4 superfamily, also known as the tetraspanin family. The proteins mediate signal transduction events that play a role in the regulation of cell development, activation, growth, and motility. This encoded protein is a cell surface glycoprotein that is known to complex with integrins.

PRODUCT DATA



Human peripheral blood platelets stained with either FITC Anti-Human CD63 Clone 061AM1 (color-filled histogram) or an isotype control (gray histogram).

This product is supplied subject to the terms and conditions at www.innocyto.com/web/terms.php and may only be used as provided in the stated terms. Products are for Research Use Only.