

APC Anti-Human CD3 Antibody

| | |
|---------------------------|-------------------------|
| Catalog Number: | 109019, 109020 |
| Size: | 25 tests, 100 tests |
| Target Name: | CD3, T3, CD3 ϵ |
| Regulatory Status: | RUO |

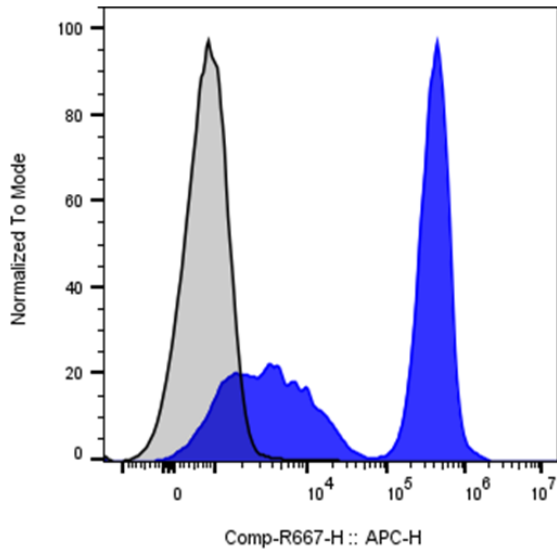
PRODUCT DETAILS

| | |
|-------------------------------|--|
| Clone: | UCHT1 |
| Application: | Flow Cytometry |
| Reactivity: | Human |
| Format: | APC |
| Isotype: | Mouse IgG1 |
| Antibody Type: | Monoclonal |
| Formulation: | Phosphate-buffered solution, pH 7.2, containing 0.09% sodium azide and 0.2% (w/v) BSA |
| Protein Concentration: | Supplied at a lot-specific concentration. |
| Storage&Handling: | The antibody solution should be stored undiluted between 2°C and 8°C, and protected from prolonged exposure to light. Do not freeze. |
| Recommended Usage: | For flow cytometric staining, it is recommended to use 5 μ L of this reagent per 0.5-1.0 million cells in a 100 μ L volume. Optimal reagent performance should be determined by titration for each specific application. |
| Excitation Laser: | Red Laser (633 nm) |
| RRID: | AB_3738881 |

BACKGROUND INFORMATION

CD3 (cluster of differentiation 3) is a protein complex and T cell co-receptor that is involved in activating both the cytotoxic T cell (CD8+ naive T cells) and T helper cells (CD4+ naive T cells). It is composed of four distinct chains. In mammals, the complex contains a CD3 γ chain, a CD3 δ chain, and two CD3 ϵ chains. CD3 ϵ chains are highly related cell-surface proteins of the immunoglobulin superfamily that plays a role in antigen recognition, signal transduction, and T cell activation.

PRODUCT DATA



Human peripheral blood lymphocytes was stained with APC Anti-Human CD3 clone UCHT1 (color-filled histogram) or an isotype control (gray histogram).