

## PE Anti-Human CD3 Antibody

<b>Catalog Number:</b>	109021, 109022
<b>Size:</b>	25 tests, 100 tests
<b>Target Name:</b>	CD3, T3, CD3 $\epsilon$
<b>Regulatory Status:</b>	RUO

### PRODUCT DETAILS

---

<b>Clone:</b>	UCHT1
<b>Application:</b>	Flow Cytometry
<b>Reactivity:</b>	Human
<b>Format:</b>	PE
<b>Isotype:</b>	Mouse IgG1
<b>Antibody Type:</b>	Monoclonal
<b>Formulation:</b>	Phosphate-buffered solution, pH 7.2, containing 0.09% sodium azide and 0.2% (w/v) BSA
<b>Protein Concentration:</b>	Supplied at a lot-specific concentration.
<b>Storage&amp;Handling:</b>	The antibody solution should be stored undiluted between 2°C and 8°C, and protected from prolonged exposure to light. Do not freeze.
<b>Recommended Usage:</b>	For flow cytometric staining, it is recommended to use 5 $\mu$ L of this reagent per 0.5-1.0 million cells in a 100 $\mu$ L volume. Optimal reagent performance should be determined by titration for each specific application.
<b>Excitation Laser:</b>	Blue Laser (488 nm) Green/Yellow laser (532/561nm)
<b>RRID:</b>	AB_3738882

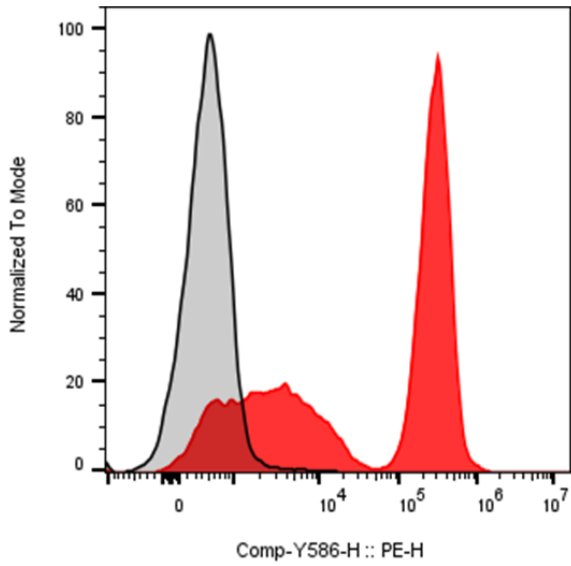
### BACKGROUND INFORMATION

---

CD3 (cluster of differentiation 3) is a protein complex and T cell co-receptor that is involved in activating both the cytotoxic T cell (CD8+ naive T cells) and T helper cells (CD4+ naive T cells). It is composed of four distinct chains. In mammals, the complex contains a CD3 $\gamma$  chain, a CD3 $\delta$  chain, and two CD3 $\epsilon$  chains. CD3 $\epsilon$  chains are highly related cell-surface proteins of the immunoglobulin superfamily that plays a role in antigen recognition, signal transduction, and T cell activation.

PRODUCT DATA

---



Human peripheral blood lymphocytes was stained with PE Anti-Human CD3 clone UCHT1 (color-filled histogram) or an isotype control (gray histogram).

This product is supplied subject to the terms and conditions at [www.innocyto.com/web/terms.php](http://www.innocyto.com/web/terms.php) and may only be used as provided in the stated terms. Products are for Research Use Only.