

Anti-Human CD196 (CCR6) Antibody

Catalog Number:	111101, 111102
Size:	25 ug, 100 ug
Target Name:	CD196, CCR6, DRY-6, STRL22,CKR-L3
Regulatory Status:	RUO

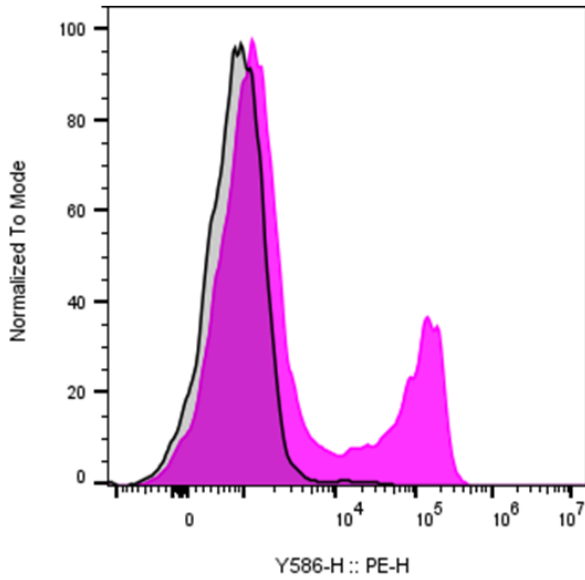
PRODUCT DETAILS

Clone:	196AM1
Application:	Flow Cytometry
Reactivity:	Human
Format:	Purified
Isotype:	Mouse IgG1
Antibody Type:	Monoclonal
Formulation:	Phosphate-buffered solution, pH 7.2, containing 0.09% sodium azide
Protein Concentration:	0.5 mg/mL
Storage&Handling:	The antibody solution should be stored between 2°C and 8°C
Recommended Usage:	For flow cytometric staining, it is recommended to use less than 0.1 ug of this reagent per 0.5-1.0 million cells in a 100 µL volume. Optimal reagent performance should be determined by titration for each specific application.

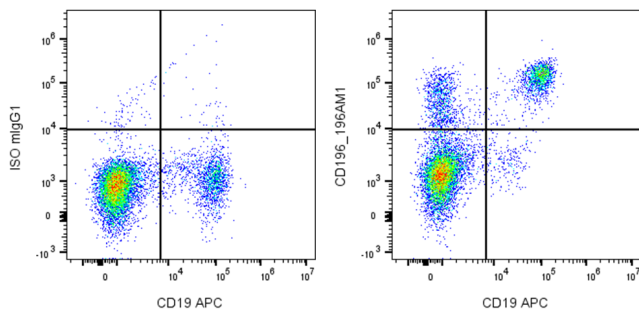
BACKGROUND INFORMATION

CCR6 is a seven-transmembrane chemokine receptor expressed on immature dendritic cells, B cells, and memory T cells. Its primary ligand, CCL20 (MIP-3α), regulates immune cell migration, B cell differentiation, and Th17 recruitment and is implicated in inflammatory diseases such as rheumatoid arthritis and inflammatory bowel disease.

PRODUCT DATA



Human peripheral blood lymphocytes was stained with Purified Anti-Human CD196 clone 196AM1 (color-filled histogram) an isotype control (gray histogram), followed by PE anti-Mouse IgG.



Human peripheral blood lymphocytes was co-stained with APC anti-human CD19 and either purified Anti-Human CD196 clone 196AM1 (right panel) or an isotype control (left panel).

This product is supplied subject to the terms and conditions at www.innocyto.com/web/terms.php and may only be used as provided in the stated terms. Products are for Research Use Only.