

APC Anti-mouse CD19 Antibody

Catalog Number:	201909, 201910
Size:	25 tests, 100 tests
Target Name:	CD19, B4, CVID3, Leu-12, MGC12802
Regulatory Status:	RUO

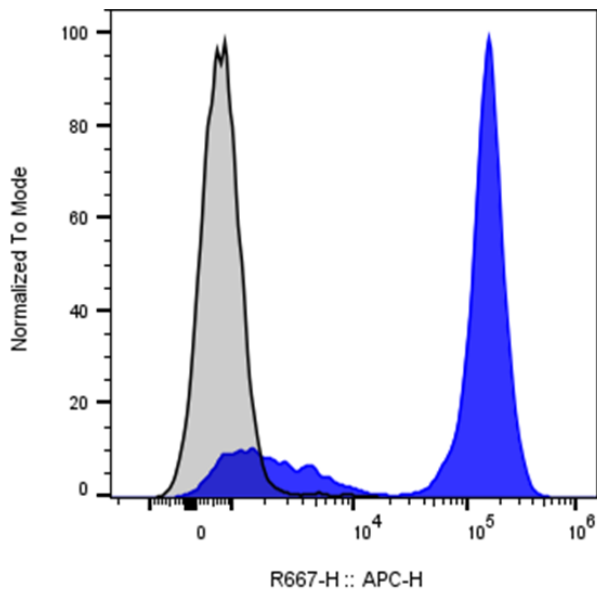
PRODUCT DETAILS

Clone:	1D3
Application:	Flow Cytometry
Reactivity:	Mouse
Format:	APC
Isotype:	Rat IgG2a
Antibody Type:	Monoclonal
Formulation:	Phosphate-buffered solution, pH 7.2, containing 0.09% sodium azide and 0.2% (w/v) BSA
Protein Concentration:	Supplied at a lot-specific concentration.
Storage&Handling:	The antibody solution should be stored undiluted between 2°C and 8°C, and protected from prolonged exposure to light. Do not freeze.
Recommended Usage:	For flow cytometric staining, it is recommended to use 5 uL of this reagent per 0.5-1.0 million cells in a 100 µL volume. Optimal reagent performance should be determined by titration for each specific application.
Excitation Laser:	Red Laser (633 nm)
RRID:	AB_3739073

BACKGROUND INFORMATION

CD19, also known as B-lymphocyte antigen CD19, B4, Leu-12, or CVID3, is a type I transmembrane glycoprotein encoded by the CD19 gene. It is expressed throughout B cell development from the pro-B stage to mature B cells and is present on most B lineage cells. CD19 functions as an adaptor protein, recruiting cytoplasmic signaling molecules to the membrane, and forms part of the CD19/CD21/CD81 complex, which lowers the activation threshold for B cell receptor (BCR) signaling. Because of its consistent expression on B cells, CD19 serves as a key biomarker for B cell development and is widely used in the diagnosis of B cell lymphomas and leukemias. It is also a major therapeutic target in immunotherapies, including CAR T-cell therapy for B cell malignancies.

PRODUCT DATA



Mouse splenocytes were stained with APC Anti-Mouse CD19 clone 1D3 (color-filled histogram) or an isotype control (gray histogram) .

This product is supplied subject to the terms and conditions at www.innocyto.com/web/terms.php and may only be used as provided in the stated terms. Products are for Research Use Only.