



InnoCyto Inc.

15375 Barranca Pkwy, Suite I-103
Irvine, CA 92618

Technical Data Sheet

Anti-Human CD4

Catalog Number: 100201, 100202

Size: 100 ug, 500 ug

Target Name: CD4, T4, Leu3a

Regulatory Status: RUO

Product Details

Clone: 004AB

Application: FC

Reactivity: Human

Format: Purified

Isotype: Rabbit IgG

Antibody Type: Monoclonal

Formulation: Phosphate-buffered solution, pH 7.2, containing 0.09% sodium azide

Protein Concentration: 0.5 mg/mL

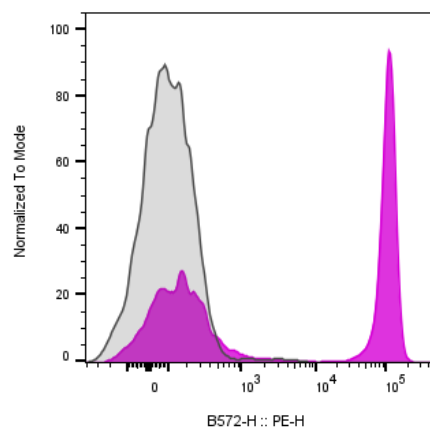
Storage and Handling: The antibody solution should be stored between 2°C and 8°C

Recommended Usage: For flow cytometric staining, it is recommended to use less than 0.2 ug of this reagent per 0.5-1.0 million cells in a 100 µL volume. Optimal reagent performance should be determined by titration for each specific application

Background Information

CD4 (cluster of differentiation 4) is a glycoprotein that serves as a co-receptor for the T-cell receptor (TCR). CD4 is found on the surface of immune cells such as helper T cells, monocytes, macrophages, and dendritic cells. CD4 is a member of the immunoglobulin superfamily. CD4+ T helper cells are white blood cells that are an essential part of the human immune system. They are often referred to as CD4 cells, T-helper cells or T4 cells.

Product Data



Human peripheral blood lymphocytes stained with either Anti-human CD4 clone 004AB (purple histogram) or an isotype control (gray histogram), followed by PE conjugated anti-Rabbit IgG.