

## Technical Data Sheet

### PE Anti-Human CD4

**Catalog Number:** 108705, 108706

**Size:** 25 tests, 100 tests

**Target Name:** CD4, T4, Leu3a

**Regulatory Status:** RUO

#### Product Details

---

**Clone:** SK3

**Application:** FC

**Reactivity:** Human

**Format:** PE

**Isotype:** Mouse IgG1

**Antibody Type:** Monoclonal

**Formulation:** Phosphate-buffered solution, pH 7.2, containing 0.09% sodium azide and 0.2% (w/v) BSA

**Protein Concentration:** Supplied at a lot-specific concentration.

**Storage and Handling:** The antibody solution should be stored undiluted between 2°C and 8°C, and protected from prolonged exposure to light. Do not freeze.

**Recommended Usage:** For flow cytometric staining, it is recommended to use 5 uL of this reagent per 0.5-1.0 million cells in a 100 µL volume. Optimal reagent performance should be determined by titration for each specific application.

**Excitation Laser:** Blue Laser (488 nm) Green/Yellow laser (532/561nm)

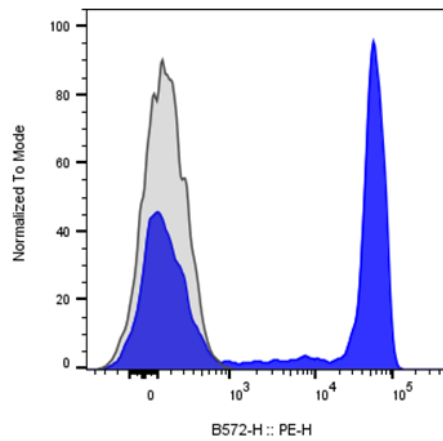
#### Background Information

---

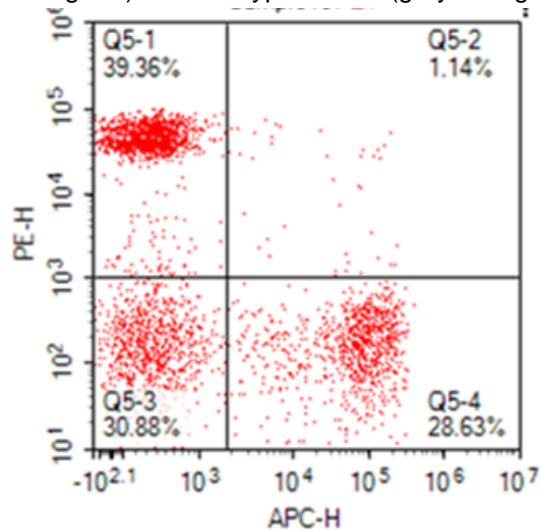
CD4 (cluster of differentiation 4) is a glycoprotein that serves as a co-receptor for the T-cell receptor (TCR). CD4 is found on the surface of immune cells such as helper T cells, monocytes, macrophages, and dendritic cells. CD4 is a member of the immunoglobulin superfamily. CD4+ T helper cells are white blood cells that are an essential part of the human immune system. They are often referred to as CD4 cells, T-helper cells or T4 cells.

#### Product Data

---



Human peripheral blood lymphocytes stained with either PE Anti-human CD4 clone SK3 (blue histogram) or an isotype control (gray histogram).



Human peripheral blood lymphocytes stained with APC anti-human CD8 clone SK1 and PE anti-human CD4 clone SK4