

iF488 Anti-Mouse CD5 Antibody

Catalog Number:	203205, 203206
Size:	25 tests, 100 tests
Target Name:	CD5, Ly-12, Ly-1, Lyt-1, Tp67
Regulatory Status:	RUO

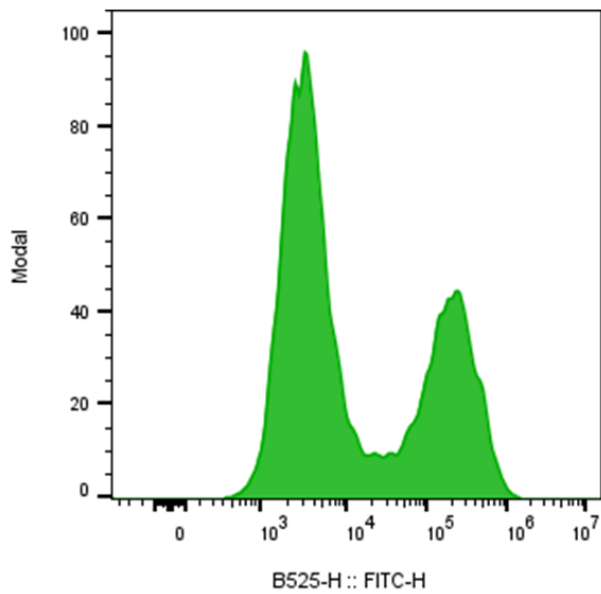
PRODUCT DETAILS

Clone:	53-7.3
Application:	Flow Cytometry
Reactivity:	Mouse
Format:	iF488
Isotype:	Rat IgG2a
Antibody Type:	Monoclonal
Formulation:	Phosphate-buffered solution, pH 7.2, containing 0.09% sodium azide and 0.2% (w/v) BSA
Protein Concentration:	Supplied at a lot-specific concentration.
Storage&Handling:	The antibody solution should be stored undiluted between 2°C and 8°C, and protected from prolonged exposure to light. Do not freeze.
Recommended Usage:	For flow cytometric staining, it is recommended to use 5 uL of this reagent per 0.5-1.0 million cells in a 100 µL volume. Optimal reagent performance should be determined by titration for each specific application.
Excitation Laser:	Blue Laser (488 nm)
Isotype Control:	300202

BACKGROUND INFORMATION

CD5 is a single-chain transmembrane glycoprotein expressed predominantly on mouse T cells and B1 cells, a specialized subset of IgM-secreting B cells. It functions as a negative regulator of antigen receptor signaling by attenuating signals from the T cell receptor (TCR) and B cell receptor (BCR), thereby modulating lymphocyte activation thresholds. Through interactions with intracellular phosphatases such as SHP-1, CD5 helps maintain immune tolerance and limits autoreactive responses. CD5-expressing cells are also associated with regulatory functions, including cytokine production such as IL-10. Owing to its regulatory role, CD5 is an important marker and functional modulator in mouse T and B cell development, activation, and immune homeostasis.

PRODUCT DATA



Mouse splenocytes were stained with iF488 Anti-CD5 antibody clone 53-7.3 (color-filled histogram).

This product is supplied subject to the terms and conditions at www.innocyto.com/web/terms.php and may only be used as provided in the stated terms. Products are for Research Use Only.