

PE Anti-His tag Antibody

Catalog Number:	300711, 300712
Size:	25 tests, 100 tests
Target Name:	His Tag, histidine-tag
Regulatory Status:	RUO

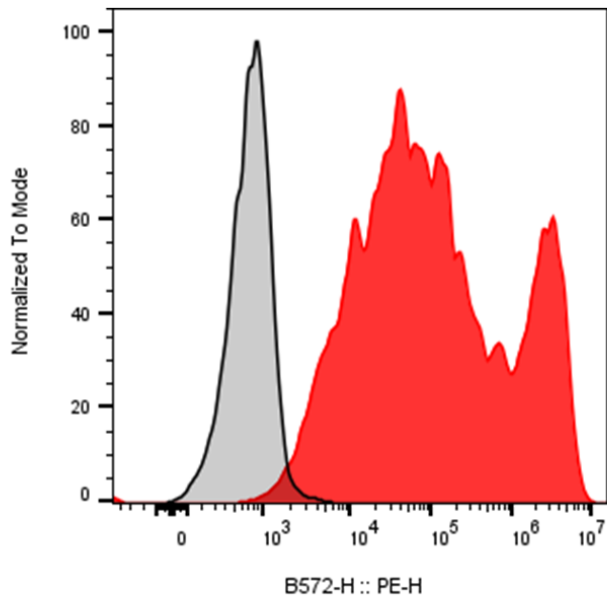
PRODUCT DETAILS

Clone:	1005AB
Application:	Flow Cytometry
Reactivity:	His-tag, All Species Expected
Format:	PE
Isotype:	Rabbit IgG
Antibody Type:	Monoclonal
Formulation:	Phosphate-buffered solution, pH 7.2, containing 0.09% sodium azide and 0.2% (w/v) BSA
Protein Concentration:	Supplied at a lot-specific concentration.
Storage&Handling:	The antibody solution should be stored undiluted between 2°C and 8°C, and protected from prolonged exposure to light. Do not freeze.
Recommended Usage:	For flow cytometric staining, it is recommended to use 5 uL of this reagent per 0.5-1.0 million cells in a 100 µL volume. Optimal reagent performance should be determined by titration for each specific application. APC has an excitation max at 650 nm and an emission max at 660 nm.
Excitation Laser:	Blue Laser (488 nm) Green/Yellow laser (532/561nm)
Isotype Control:	301814

BACKGROUND INFORMATION

This antibody is raised against a synthetic 6xHis peptide. It can be used for Western blotting to detect His-tagged proteins (6xHis or more) at the N-terminus, C-terminus, or within the protein sequence. It is also suitable for flow cytometry or immunofluorescent staining of His-tagged proteins.

PRODUCT DATA



Multi-tag (including His) transmembrane protein transfected CHO cells were stained with either PE Anti-His antibody clone 1005AB (color-filled histogram) or an isotype control (gray histogram).

This product is supplied subject to the terms and conditions at www.innocyto.com/web/terms.php and may only be used as provided in the stated terms. Products are for Research Use Only.