

Technical Data Sheet

Anti-Human CD3

Catalog Number: 108801, 108802

Size: 100 ug, 500 ug

Target Name: CD3, T3, CD3?

Regulatory Status: RUO

Product Details

Clone: SP34

Application: FC

Reactivity: Human (Tested), Rhesus, Cynomolgus, Baboon (Reported)

Format: Purified

Isotype: Mouse IgG1

Antibody Type: Monoclonal

Formulation: Phosphate-buffered solution, pH 7.2, containing 0.09% sodium azide

Protein Concentration: 0.5 mg/mL

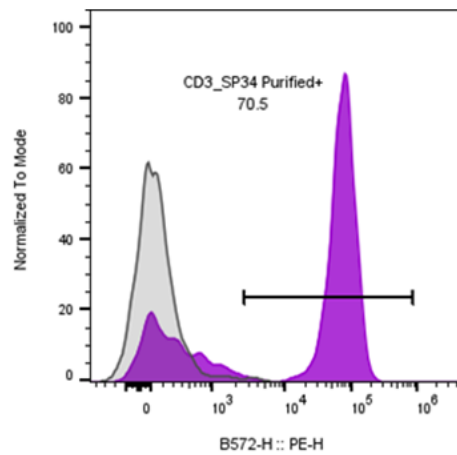
Storage and Handling: The antibody solution should be stored between 2°C and 8°C

Recommended Usage: For flow cytometric staining, it is recommended to use less than 0.2 ug of this reagent per 0.5-1.0 million cells in a 100 µL volume. Optimal reagent performance should be determined by titration for each specific application

Background Information

CD3 (cluster of differentiation 3) is a protein complex and T cell co-receptor that is involved in activating both the cytotoxic T cell (CD8+ naive T cells) and T helper cells (CD4+ naive T cells). It is composed of four distinct chains. In mammals, the complex contains a CD3 ϵ chain, a CD3 δ chain, and two CD3 γ chains. CD3 γ chains are highly related cell-surface proteins of the immunoglobulin superfamily that plays a role in antigen recognition, signal transduction, and T cell activation.

Product Data



Human peripheral blood lymphocytes stained either with purified anti-human CD3 clone SP34 (purple histogram) or an isotype control (gray histogram), followed by PE anti-mouse IgG 2nd antibody.