

Technical Data Sheet

PE Anti-Human CD3

Catalog Number: 108805, 108806

Size: 25 tests, 100 tests

Target Name: CD3, T3, CD3?

Regulatory Status: RUO

Product Details

Clone: SP34

Application: FC

Reactivity: Human (Tested), Rhesus, Cynomolgus, Baboon (Reported)

Format: PE

Isotype: Mouse IgG1

Antibody Type: Monoclonal

Formulation: Phosphate-buffered solution, pH 7.2, containing 0.09% sodium azide and 0.2% (w/v) BSA

Protein Concentration: Supplied at a lot-specific concentration.

Storage and Handling: The antibody solution should be stored undiluted between 2°C and 8°C, and protected from prolonged exposure to light. Do not freeze.

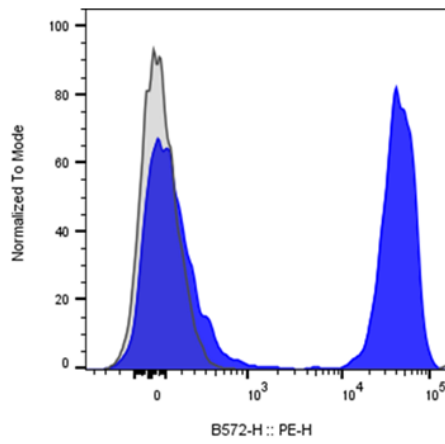
Recommended Usage: For flow cytometric staining, it is recommended to use 5 uL of this reagent per 0.5-1.0 million cells in a 100 µL volume. Optimal reagent performance should be determined by titration for each specific application.

Excitation Laser: Blue Laser (488 nm) Green/Yellow laser (532/561nm)

Background Information

CD3 (cluster of differentiation 3) is a protein complex and T cell co-receptor that is involved in activating both the cytotoxic T cell (CD8+ naive T cells) and T helper cells (CD4+ naive T cells). It is composed of four distinct chains. In mammals, the complex contains a CD3? chain, a CD3? chain, and two CD3? chains. CD3? chains are highly related cell-surface proteins of the immunoglobulin superfamily that plays a role in antigen recognition, signal transduction, and T cell activation.

Product Data



Human peripheral blood lymphocytes stained with either PE Anti-Human CD3 clone SP34 (blue histogram) or an isotype control (gray histogram).