

Technical Data Sheet

Anti-Human CD21

Catalog Number: 108901, 108902

Size: 100 ug, 500 ug

Target Name: CD21, Complement C3d receptor (C3dR), complement receptor 2 (CR2), Epstein-Barr virus receptor

Regulatory Status: RUO

Product Details

Clone: THB5

Application: FC

Reactivity: Human

Format: Purified

Isotype: Mouse IgG2a

Antibody Type: Monoclonal

Formulation: Phosphate-buffered solution, pH 7.2, containing 0.09% sodium azide

Protein Concentration: 0.5 mg/mL

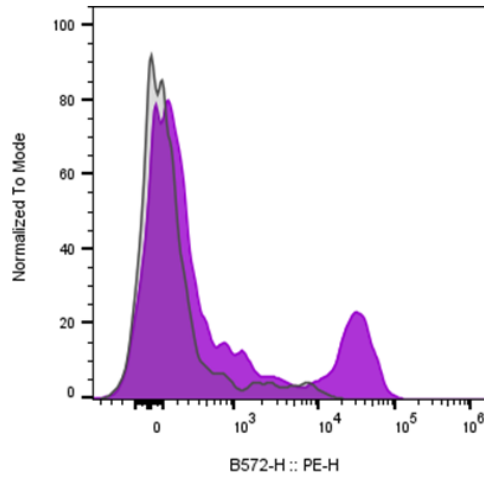
Storage and Handling: The antibody solution should be stored between 2°C and 8°C

Recommended Usage: For flow cytometric staining, it is recommended to use less than 0.25 ug of this reagent per 0.5-1.0 million cells in a 100 µL volume. Optimal reagent performance should be determined by titration for each specific application

Background Information

Complement receptor type 2 (CR2), also known as complement C3d receptor, Epstein-Barr virus receptor, and CD21 (cluster of differentiation 21), is a protein that in humans is encoded by the CR2 gene. CR2 is involved in the complement system. It binds to iC3b (inactive derivative of C3b), C3dg, or C3d.[5] B cells express CR2 on their surfaces, allowing the complement system to play a role in B-cell activation and maturation.

Product Data



Human peripheral blood lymphocytes stained either with purified anti-human CD21 clone THB5 (purple histogram) or an isotype control (gray histogram), followed by PE anti-mouse IgG 2nd antibody.