

iF647 Anti-mouse CD117 (c-Kit) Antibody

Catalog Number:	204103, 204104
Size:	25 tests, 100 tests
Target Name:	CD117, CD-117, c-Kit, Stem Cell Factor Receptor (SCFR)
Regulatory Status:	RUO

PRODUCT DETAILS

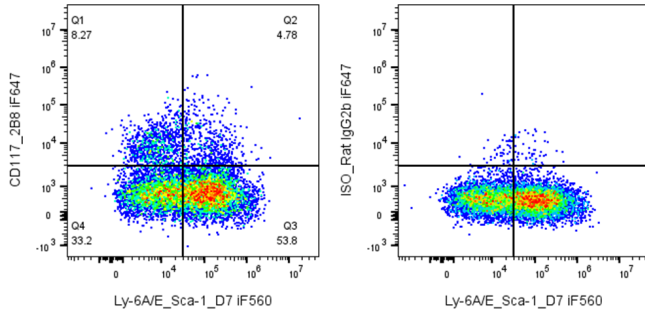
Clone:	2B8
Application:	Flow Cytometry
Reactivity:	Mouse
Format:	iF647
Isotype:	Rat IgG2b
Antibody Type:	Monoclonal
Formulation:	Phosphate-buffered solution, pH 7.2, containing 0.09% sodium azide and 0.2% (w/v) BSA
Protein Concentration:	Supplied at a lot-specific concentration.
Storage&Handling:	The antibody solution should be stored undiluted between 2°C and 8°C, and protected from prolonged exposure to light. Do not freeze.
Recommended Usage:	For flow cytometric staining, it is recommended to use 5 µL of this reagent per 0.5-1.0 million cells in a 100 µL volume. Optimal reagent performance should be determined by titration for each specific application. iF647 has an excitation max at 656 nm and an emission max at 670 nm.
Excitation Laser:	Red Laser (633 nm)
Isotype Control:	303603

BACKGROUND INFORMATION

CD117, also known as c-Kit or SCFR, is a 145 kD transmembrane tyrosine-kinase receptor and member of the immunoglobulin superfamily. It functions as a critical receptor for stem cell factor (SCF), activating signaling pathways (e.g., STAT) essential for hematopoiesis, melanogenesis, and gametogenesis.

The protein is primarily expressed on hematopoietic stem cells, mast cells, myeloid progenitors, and certain tumor cells like AML. In analytical applications such as flow cytometry, CD117 antibodies serve as vital markers for identifying multipotent progenitors and studying cell survival, proliferation, and differentiation across various embryonic and mature cell lineages.

PRODUCT DATA



Mouse splenocytes were stained with iF560 Anti-Mouse Ly-6A/E clone D7 and iF647 Anti-Mouse CD117 clone 2B8 (left) or an isotype control (right).

This product is supplied subject to the terms and conditions at www.innocyto.com/web/terms.php and may only be used as provided in the stated terms. Products are for Research Use Only.