

PE Anti-Human CD11b (Integrin α M) Antibody

Catalog Number:	100409, 100410
Size:	25 tests, 100 tests
Target Name:	CD11b, Integrin α M chain, C3biR, CR3, Mac-1, Mo1, ITGAM
Regulatory Status:	RUO

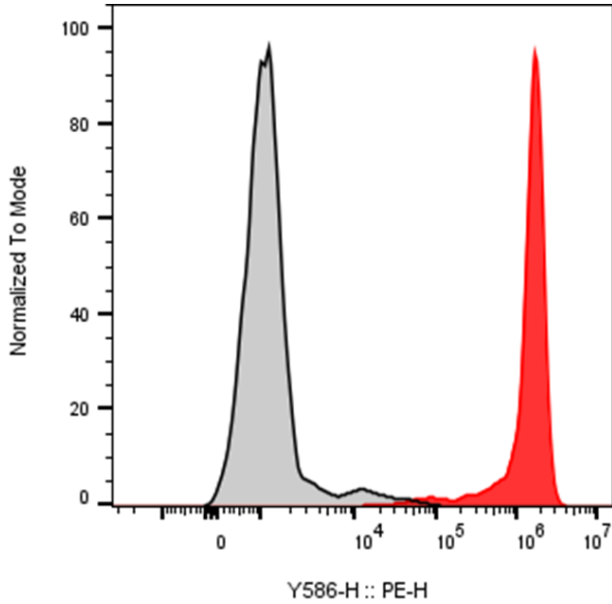
PRODUCT DETAILS

Clone:	011bAB
Application:	Flow Cytometry
Reactivity:	Human
Format:	PE
Isotype:	Rabbit IgG
Antibody Type:	Monoclonal
Formulation:	Phosphate-buffered solution, pH 7.2, containing 0.09% sodium azide and 0.2% (w/v) BSA
Protein Concentration:	Supplied at a lot-specific concentration.
Storage&Handling:	The antibody solution should be stored undiluted between 2°C and 8°C, and protected from prolonged exposure to light. Do not freeze.
Recommended Usage:	For flow cytometric staining, it is recommended to use 5 μ L of this reagent per 0.5-1.0 million cells in a 100 μ L volume. Optimal reagent performance should be determined by titration for each specific application. PE has an excitation max at 565 nm and an emission max at 575 nm.
Excitation Laser:	Blue Laser (488 nm) Green/Yellow laser (532/561nm)
Isotype Control:	301814

BACKGROUND INFORMATION

Integrin Alpha M (ITGAM); the alpha subunit of Mac-1 (Macrophage-1 antigen), the CR3 complement receptor which consists of CD11b and CD18. CR3 is a human cell surface receptor, found on polymorphonuclear leukocytes (mostly neutrophils), NK cells, and mononuclear phagocytes like macrophages, which is capable of recognizing and binding to many molecules found on the surfaces of invading bacteria. Binding to the receptor causes phagocytosis and destruction of the foreign cell.

PRODUCT DATA



Human peripheral blood monocytes were stained with PE Anti-Human CD11b clone 011bAB (color-filled histogram) or an isotype control (gray histogram).

This product is supplied subject to the terms and conditions at www.innocyto.com/web/terms.php and may only be used as provided in the stated terms. Products are for Research Use Only.