

PE/iF594 Anti-Human TCR Vb5.2/5.3 antibody

| | |
|---------------------------|---------------------|
| Catalog Number: | 107607, 107608 |
| Size: | 25 tests, 100 tests |
| Target Name: | TCR Vb5.2/5.3 |
| Regulatory Status: | RUO |

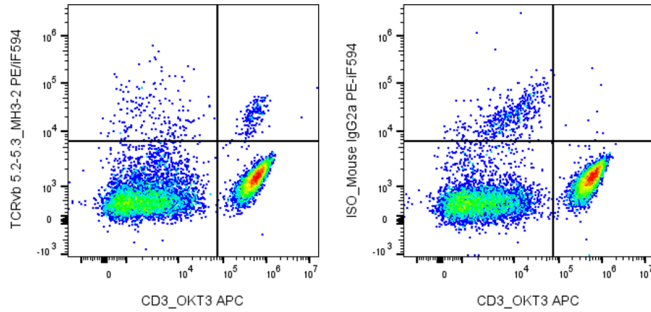
PRODUCT DETAILS

| | |
|-------------------------------|--|
| Clone: | MH3-2 |
| Application: | Flow Cytometry |
| Reactivity: | Human |
| Format: | PE/iF594 |
| Isotype: | Mouse IgG2a |
| Antibody Type: | Monoclonal |
| Formulation: | Phosphate-buffered solution, pH 7.2, containing 0.09% sodium azide and 0.2% (w/v) BSA |
| Protein Concentration: | Supplied at a lot-specific concentration. |
| Storage&Handling: | The antibody solution should be stored undiluted between 2°C and 8°C, and protected from prolonged exposure to light. Do not freeze. |
| Recommended Usage: | For flow cytometric staining, it is recommended to use 5 µL of this reagent per 0.5-1.0 million cells in a 100 µL volume. Optimal reagent performance should be determined by titration for each specific application. PE/iF594 has an excitation max at 565 nm and an emission max at 603 nm. |
| Excitation Laser: | Blue Laser (488 nm) Green/Yellow laser (532/561nm) |
| Isotype Control: | 301517 |

BACKGROUND INFORMATION

Vβ5 T cell receptor (TCR Vβ5) is a variant of the TCR β chain which is heterodimerized with TCR α chain and expressed on a subset of αβ+ T cells. TCR α/β recognizes peptides presented by the MHC molecules and initiates T cell mediated immune responses. Patients with multiple sclerosis present an expansion of Vβ5.2+/5.3+ autoreactive T cells.

PRODUCT DATA



Human peripheral lymphocytes were stained with PE Anti-Human CD3 clone OKT3 and PE/iF594 Anti-Human TCRv β 5.2/5.3 clone MH3-2 (left) or an isotype control (right).

This product is supplied subject to the terms and conditions at www.innocyto.com/web/terms.php and may only be used as provided in the stated terms. Products are for Research Use Only.