

Technical Data Sheet

PE Anti-Human CD21

Catalog Number: 108911, 108912

Size: 25 tests, 100 tests

Target Name: CD21, Complement C3d receptor (C3dR), complement receptor 2 (CR2), Epstein-Barr virus receptor

Regulatory Status: RUO

Product Details

Clone: THB5

Application: FC

Reactivity: Human

Format: PE

Isotype: Mouse IgG2a

Antibody Type: Monoclonal

Formulation: Phosphate-buffered solution, pH 7.2, containing 0.09% sodium azide and 0.2% (w/v) BSA

Protein Concentration: Supplied at a lot-specific concentration.

Storage and Handling: The antibody solution should be stored undiluted between 2°C and 8°C, and protected from prolonged exposure to light. Do not freeze.

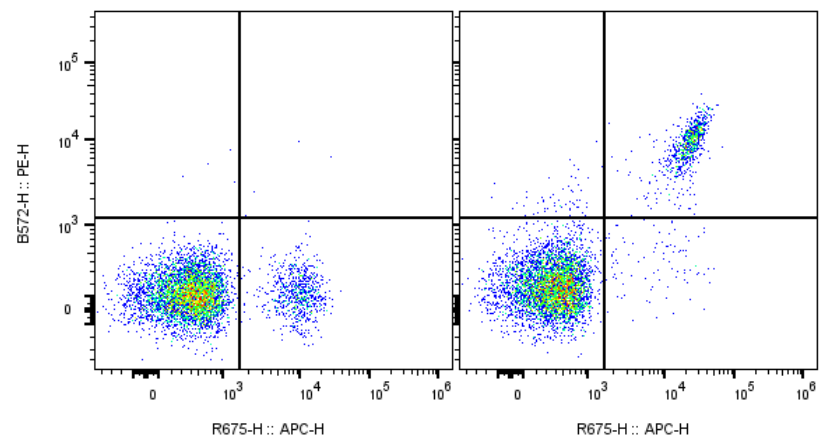
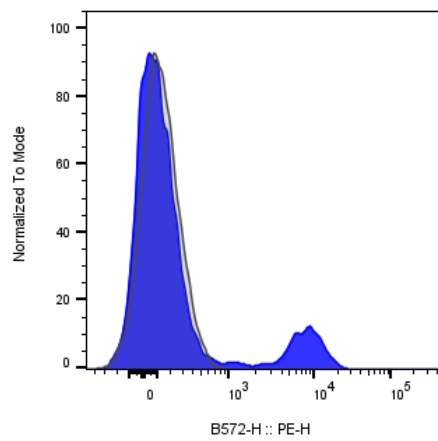
Recommended Usage: For flow cytometric staining, it is recommended to use 5 uL of this reagent per 0.5-1.0 million cells in a 100 µL volume. Optimal reagent performance should be determined by titration for each specific application.

Excitation Laser: Blue Laser (488 nm) Green/Yellow laser (532/561nm)

Background Information

Complement receptor type 2 (CR2), also known as complement C3d receptor, Epstein–Barr virus receptor, and CD21 (cluster of differentiation 21), is a protein that in humans is encoded by the CR2 gene. CR2 is involved in the complement system. It binds to iC3b (inactive derivative of C3b), C3dg, or C3d.[5] B cells express CR2 on their surfaces, allowing the complement system to play a role in B-cell activation and maturation.

Product Data



Human peripheral blood lymphocytes stained with anti-human CD19 iF647 (APC) and PE anti-human CD21 clone THB5 (blue histogram, right panel) or an isotype control (gray histogram, Middle panel)