

## PB Anti-Mouse CD45.2 Antibody

<b>Catalog Number:</b>	202315, 202316
<b>Size:</b>	25 tests, 100 tests
<b>Target Name:</b>	CD45.2, Ly-5.2, LCA
<b>Regulatory Status:</b>	RUO

### PRODUCT DETAILS

---

<b>Clone:</b>	104
<b>Application:</b>	Flow Cytometry
<b>Reactivity:</b>	Mouse
<b>Format:</b>	PB
<b>Isotype:</b>	Mouse IgG2a
<b>Antibody Type:</b>	Monoclonal
<b>Formulation:</b>	Phosphate-buffered solution, pH 7.2, containing 0.09% sodium azide and 0.2% (w/v) BSA
<b>Protein Concentration:</b>	Supplied at a lot-specific concentration.
<b>Storage&amp;Handling:</b>	The antibody solution should be stored undiluted between 2°C and 8°C, and protected from prolonged exposure to light. Do not freeze.
<b>Recommended Usage:</b>	For flow cytometric staining, it is recommended to use 5 µL of this reagent per 0.5-1.0 million cells in a 100 µL volume. Optimal reagent performance should be determined by titration for each specific application. Pacific Blue has an excitation max at 404 nm and an emission max at 455 nm.
<b>Excitation Laser:</b>	Violet laser (405nm)
<b>Isotype Control:</b>	301515

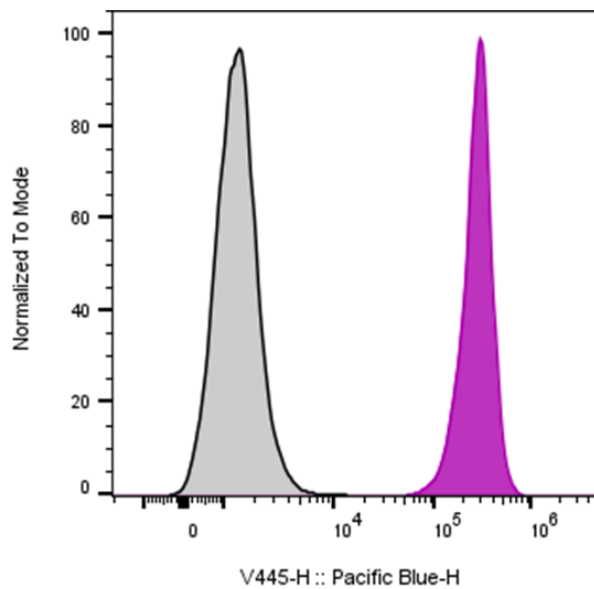
### BACKGROUND INFORMATION

---

CD45.2 is a mouse alloantigen variant of CD45, expressed by Ly5.2-bearing mouse strains (e.g., A, AKR, BALB/c, CBA/Ca, CBA/J, C3H/He, C57BL, C57BR, C57L, C58, DBA/1, DBA/2, NZB, SWR, 129). CD45 is a 180–240 kDa receptor-type protein tyrosine phosphatase (PTP) expressed on all hematopoietic cells except mature erythrocytes and platelets. CD45.2 plays a crucial role in immune cell signaling, lymphocyte development, and activation.

PRODUCT DATA

---



Mouse splenocytes were stained with PB Anti-Mouse CD45.2 clone 104 (color-filled histogram) or an isotype control (gray histogram).

This product is supplied subject to the terms and conditions at [www.innocyto.com/web/terms.php](http://www.innocyto.com/web/terms.php) and may only be used as provided in the stated terms. Products are for Research Use Only.