

iF488 Anti-Human CD298 Antibody

Catalog Number:	109105, 109106
Size:	25 tests, 100 tests
Target Name:	CD298, ATPB-3, Na, K-ATPase beta-3 polypeptide
Regulatory Status:	RUO

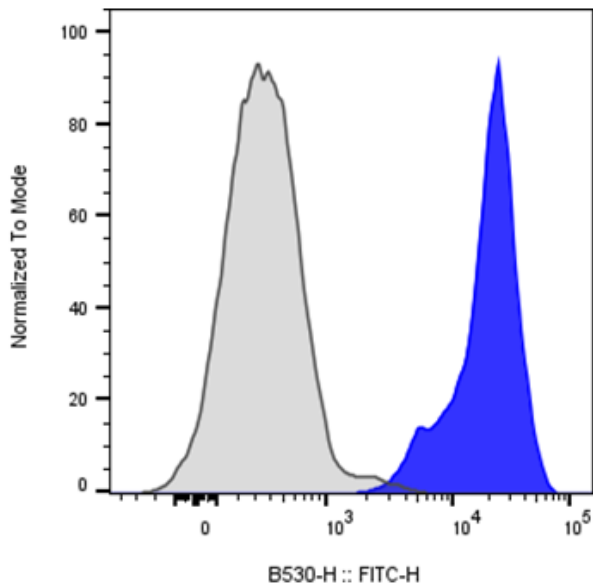
PRODUCT DETAILS

Clone:	LNH-94
Application:	Flow Cytometry
Reactivity:	Human
Format:	iF488
Isotype:	Mouse IgG1
Antibody Type:	Monoclonal
Formulation:	Phosphate-buffered solution, pH 7.2, containing 0.09% sodium azide and 0.2% (w/v) BSA
Protein Concentration:	Supplied at a lot-specific concentration.
Storage and Handling:	The antibody solution should be stored undiluted between 2°C and 8°C, and protected from prolonged exposure to light. Do not freeze.
Recommended Usage:	For flow cytometric staining, it is recommended to use 5 µL of this reagent per 0.5-1.0 million cells in a 100 µL volume. Optimal reagent performance should be determined by titration for each specific application. iF488 has an excitation max at 491 nm and an emission max at 516 nm.
Excitation Laser:	Blue Laser (488 nm)
Isotype Control:	301409

BACKGROUND INFORMATION

CD298, also known as the sodium/potassium-transporting ATPase subunit beta-3 or ATP1B3, is a 42 kDa type II transmembrane glycoprotein encoded by the ATP1B3 gene in humans. It is part of the Na⁺/K⁺-ATPase enzyme complex, which consists of a catalytic α subunit and a regulatory β subunit. CD298 belongs to the family of Na⁺/K⁺ and H⁺/K⁺ ATPase beta chain proteins and specifically to the Na⁺/K⁺-ATPase subfamily. This integral plasma membrane protein is essential for establishing and maintaining the electrochemical gradients of sodium and potassium ions across the cell membrane—gradients that are crucial for osmoregulation, sodium-coupled transport of various molecules, and the electrical excitability of nerve and muscle cells. The β3 subunit plays a regulatory role by assisting in the proper assembly and membrane localization of the α/β heterodimer complex. CD298 is broadly expressed across various tissues, including all leukocyte populations.

PRODUCT DATA



Human peripheral blood lymphocytes stained with iF488 Anti-Human CD298 clone LNH-94 (blue histogram) or an isotype control (gray histogram).

This product is supplied subject to the terms and conditions at www.innocyto.com/web/terms.php and may only be used as provided in the stated terms. Products are for Research Use Only.