

Technical Data Sheet

PE Anti-Human CD38

Catalog Number: 109209, 109210

Size: 25 tests, 100 tests

Target Name: CD38, gp45, Cyclic ADP-ribose hydrolase 1,T10, ADP-ribosyl cyclase

Regulatory Status: RUO

Product Details

Clone: HIT2

Application: FC

Reactivity: Human

Format: PE

Isotype: Mouse IgG1

Antibody Type: Monoclonal

Formulation: Phosphate-buffered solution, pH 7.2, containing 0.09% sodium azide and 0.2% (w/v) BSA

Protein Concentration: Supplied at a lot-specific concentration.

Storage and Handling: The antibody solution should be stored undiluted between 2°C and 8°C, and protected from prolonged exposure to light. Do not freeze.

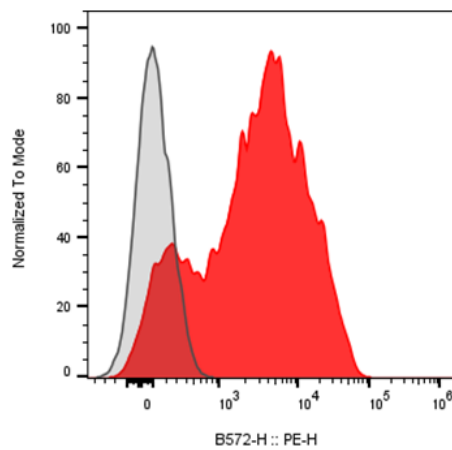
Recommended Usage: For flow cytometric staining, it is recommended to use 5 uL of this reagent per 0.5-1.0 million cells in a 100 µL volume. Optimal reagent performance should be determined by titration for each specific application.

Excitation Laser: Blue Laser (488 nm) Green/Yellow laser (532/561nm)

Background Information

CD38 (ADP-ribosyl cyclase 1) is a Type II membrane protein involved in calcium signaling through the conversion of NAD(P)+ into cADPR, NAADP+, and ADP-ribose. It is broadly expressed in immune cells and various tissues, and is linked to immune regulation, cancer, and metabolic disorders. CD38 also serves as a prognostic marker in leukemia. Ordering Products Recombinant Protein & Antibody Services Conjugation Services Learning Technology Recombinant Proteins Dual Labelling Conjugation About InnoCyto

Product Data



Human peripheral blood lymphocytes stained either with PE Anti-Human CD38 clone HIT2 (Red color-filled histogram) or an isotype control (gray histogram).