

iF700 Anti-Human CD11b Antibody

Catalog Number:	100411, 100412
Size:	25 tests, 100 tests
Target Name:	CD11b, Integrin α M chain, C3biR, CR3, Mac-1, Mo1, ITGAM
Regulatory Status:	RUO

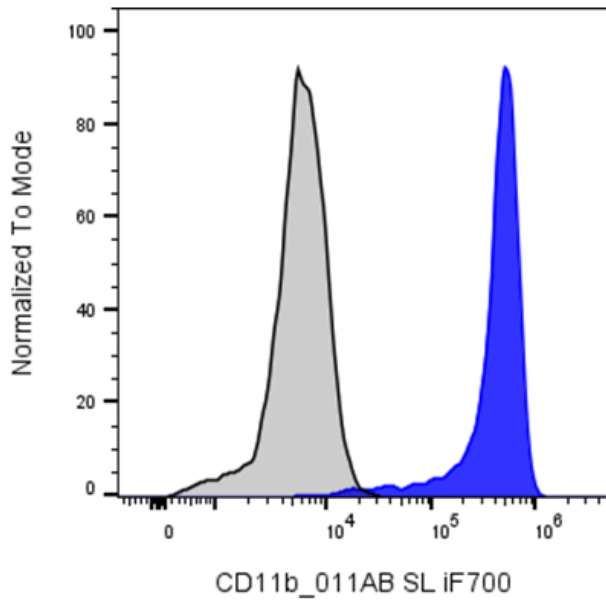
PRODUCT DETAILS

Clone:	011bAB
Application:	Flow Cytometry
Reactivity:	Human
Format:	iF700
Isotype:	Rabbit IgG
Antibody Type:	Monoclonal
Formulation:	Phosphate-buffered solution, pH 7.2, containing 0.09% sodium azide and 0.2% (w/v) BSA
Protein Concentration:	Supplied at a lot-specific concentration.
Storage&Handling:	The antibody solution should be stored undiluted between 2°C and 8°C, and protected from prolonged exposure to light. Do not freeze.
Recommended Usage:	For flow cytometric staining, it is recommended to use 5 μ L of this reagent per 0.5-1.0 million cells in a 100 μ L volume. Optimal reagent performance should be determined by titration for each specific application. iF700 has an excitation max at 690 nm and an emission max at 710 nm.
Excitation Laser:	Red Laser (633 nm)
Isotype Control:	303303

BACKGROUND INFORMATION

Integrin Alpha M (ITGAM); the alpha subunit of Mac-1 (Macrophage-1 antigen), the CR3 complement receptor which consists of CD11b and CD18. CR3 is a human cell surface receptor, found on polymorphonuclear leukocytes (mostly neutrophils), NK cells, and mononuclear phagocytes like macrophages, which is capable of recognizing and binding to many molecules found on the surfaces of invading bacteria. Binding to the receptor causes phagocytosis and destruction of the foreign cell.

PRODUCT DATA



Human peripheral blood monocytes were stained with Fc silent i F700 Anti-Human CD11b clone 011b AB (color-filled histogram) or an isotype control (gray histogram).

This product is supplied subject to the terms and conditions at www.innocyto.com/web/terms.php and may only be used as provided in the stated terms. Products are for Research Use Only.