

APC Anti-Human CD15 Antibody

Catalog Number:	100715, 100716
Size:	25 tests, 100 tests
Target Name:	CD15, Lewis X, 3-FAL, 3-FL, LNFP III, Lex , SSEA-1, X-hapten
Regulatory Status:	RUO

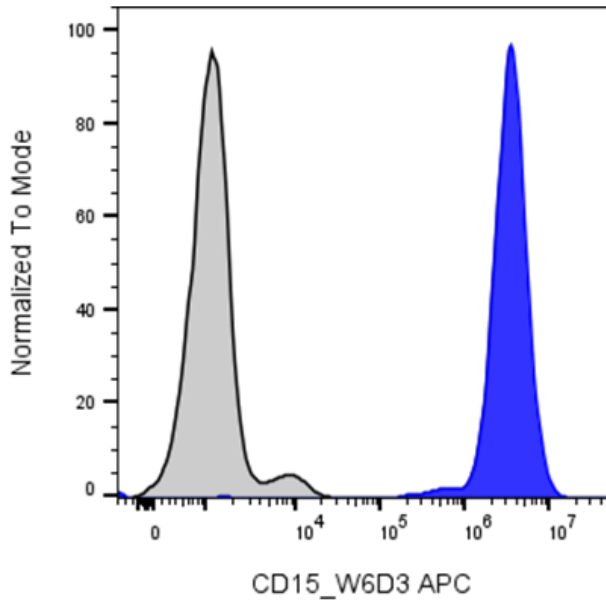
PRODUCT DETAILS

Clone:	W6D3
Application:	Flow Cytometry
Reactivity:	Human
Format:	APC
Isotype:	Mouse IgG1
Antibody Type:	Monoclonal
Formulation:	Phosphate-buffered solution, pH 7.2, containing 0.09% sodium azide and 0.2% (w/v) BSA
Protein Concentration:	Supplied at a lot-specific concentration.
Storage&Handling:	The antibody solution should be stored undiluted between 2°C and 8°C, and protected from prolonged exposure to light. Do not freeze.
Recommended Usage:	For flow cytometric staining, it is recommended to use 5 µL of this reagent per 0.5-1.0 million cells in a 100 µL volume. Optimal reagent performance should be determined by titration for each specific application. APC has an excitation max at 650 nm and an emission max at 660 nm.
Excitation Laser:	Red Laser (633 nm)
Isotype Control:	301403

BACKGROUND INFORMATION

CD15, a carbohydrate adhesion molecule (not a protein) that mediates phagocytosis and chemotaxis, found on neutrophils; expressed in patients with Hodgkin disease, some B-cell chronic lymphocytic leukemias, acute lymphoblastic leukemias, and most acute nonlymphocytic leukemias. It is also called Lewis x and SSEA-1 (stage specific embryonic antigen 1) and represents a marker for murine pluripotent stem cells, in which it plays an important role in adhesion and migration of the cells in the preimplantation embryo.

PRODUCT DATA



Human granulocytes were stained with APC Anti-Human CD15 clone W6D3 (color-filled histogram) or an isotype control (gray histogram)

This product is supplied subject to the terms and conditions at www.innocyto.com/web/terms.php and may only be used as provided in the stated terms. Products are for Research Use Only.