

## iF700 Anti-Human CD15 Antibody

<b>Catalog Number:</b>	100719, 100720
<b>Size:</b>	25 tests, 100 tests
<b>Target Name:</b>	CD15, Lewis X, 3-FAL, 3-FL, LNFP III, Lex , SSEA-1, X-hapten
<b>Regulatory Status:</b>	RUO

### PRODUCT DETAILS

---

<b>Clone:</b>	W6D3
<b>Application:</b>	Flow Cytometry
<b>Reactivity:</b>	Human
<b>Format:</b>	iF700
<b>Isotype:</b>	Mouse IgG1
<b>Antibody Type:</b>	Monoclonal
<b>Formulation:</b>	Phosphate-buffered solution, pH 7.2, containing 0.09% sodium azide and 0.2% (w/v) BSA
<b>Protein Concentration:</b>	Supplied at a lot-specific concentration.
<b>Storage&amp;Handling:</b>	The antibody solution should be stored undiluted between 2°C and 8°C, and protected from prolonged exposure to light. Do not freeze.
<b>Recommended Usage:</b>	For flow cytometric staining, it is recommended to use 5 uL of this reagent per 0.5-1.0 million cells in a 100 µL volume. Optimal reagent performance should be determined by titration for each specific application. iF700 has an excitation max at 690 nm and an emission max at 710 nm.
<b>Excitation Laser:</b>	Red Laser (633 nm)
<b>Isotype Control:</b>	301433

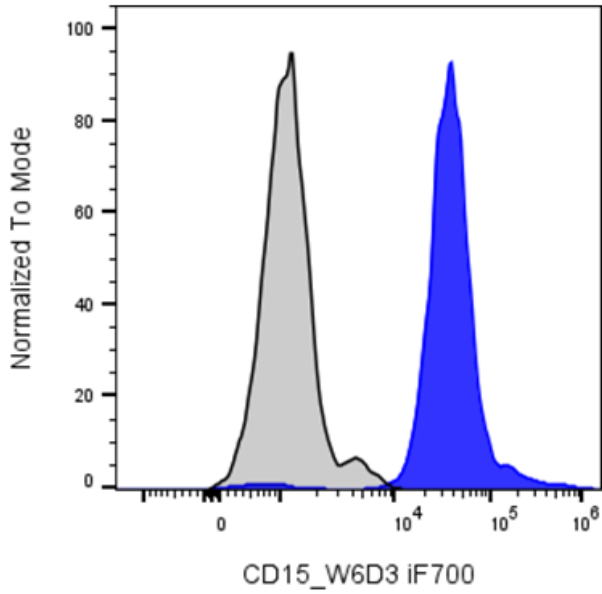
### BACKGROUND INFORMATION

---

CD15, a carbohydrate adhesion molecule (not a protein) that mediates phagocytosis and chemotaxis, found on neutrophils; expressed in patients with Hodgkin disease, some B-cell chronic lymphocytic leukemias, acute lymphoblastic leukemias, and most acute nonlymphocytic leukemias. It is also called Lewis x and SSEA-1 (stage specific embryonic antigen 1) and represents a marker for murine pluripotent stem cells, in which it plays an important role in adhesion and migration of the cells in the preimplantation embryo.

PRODUCT DATA

---



Human granulocytes were stained with i F700 Anti-Human CD15 clone W6D3 (color-filled histogram) or an isotype control (gray histogram)

This product is supplied subject to the terms and conditions at [www.innocyto.com/web/terms.php](http://www.innocyto.com/web/terms.php) and may only be used as provided in the stated terms. Products are for Research Use Only.