

## Biotin Anti-Human CD45RA Antibody

<b>Catalog Number:</b>	109403, 109404
<b>Size:</b>	25 ug, 100 ug
<b>Target Name:</b>	CD45RA, GP180, LY5, LCA, PTPRC
<b>Regulatory Status:</b>	RUO

### PRODUCT DETAILS

---

<b>Clone:</b>	HI100
<b>Application:</b>	Flow Cytometry
<b>Reactivity:</b>	Human
<b>Format:</b>	Biotin
<b>Isotype:</b>	Mouse IgG2b
<b>Antibody Type:</b>	Monoclonal
<b>Formulation:</b>	Phosphate-buffered solution, pH 7.2, containing 0.09% sodium azide and 0.2% (w/v) BSA
<b>Protein Concentration:</b>	0.2 mg/mL
<b>Storage and Handling:</b>	The antibody solution should be stored undiluted between 2°C and 8°C, and protected from prolonged exposure to light. Do not freeze.
<b>Recommended Usage:</b>	For flow cytometric staining, it is recommended to use less than 0.05 µg of this reagent per 0.5-1.0 million cells in a 100 µL volume. Optimal reagent performance should be determined by titration for each specific application
<b>Isotype Control:</b>	301619
<b>RRID:</b>	AB_3738902

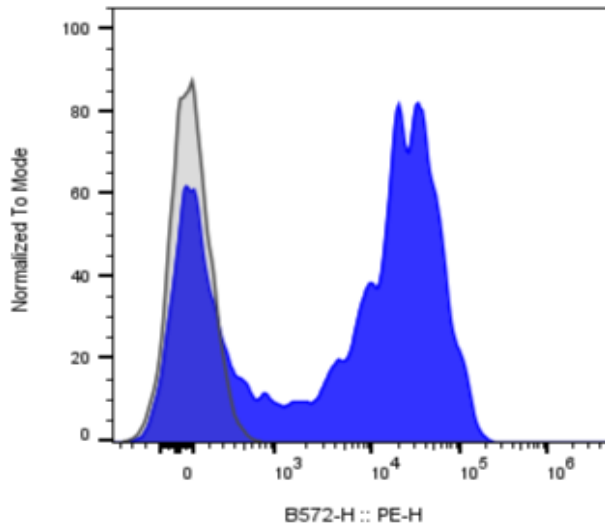
### BACKGROUND INFORMATION

---

CD45RA is a 205-220 kDa isoform of the CD45 tyrosine phosphatase, expressed on naïve/resting T cells, medullary thymocytes, B cells, and monocytes. It is found on ~40-50% of peripheral CD4<sup>+</sup> T cells, ~50% of CD8<sup>+</sup> T cells, and subsets of B cells and monocytes. CD45RA enhances TCR and BCR signaling and associates with molecules like LPAP, CD1-CD4, and galectin-1. Its expression is regulated by cytokines and can be present on some activated T cells. CD45RA-specific antibodies (e.g., HI100) are widely used to identify naïve T cells and study CD4<sup>+</sup> suppressor/inducer subsets.

PRODUCT DATA

---



Human peripheral blood lymphocytes stained with biotinylated Anti-Human CD45RA clone HI100 (blue histogram) or an isotype control (gray histogram), followed by SA-PE.

This product is supplied subject to the terms and conditions at [www.innocyto.com/web/terms.php](http://www.innocyto.com/web/terms.php) and may only be used as provided in the stated terms. Products are for Research Use Only.