

PE Anti-Human CD45RA Antibody

Catalog Number:	109405, 109406
Size:	25 tests, 100 tests
Target Name:	CD45RA, GP180, LY5, LCA, PTPRC
Regulatory Status:	RUO

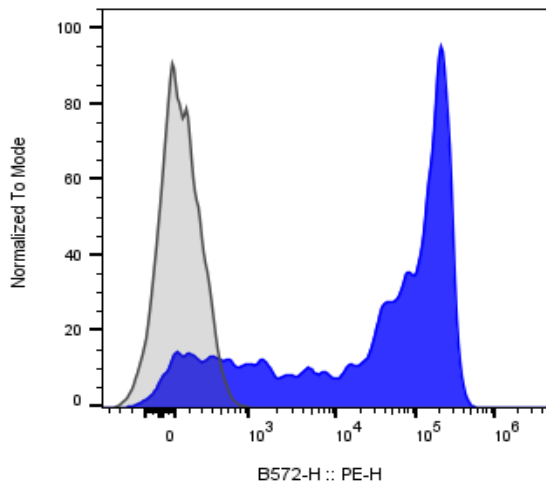
PRODUCT DETAILS

Clone:	HI100
Application:	Flow Cytometry
Reactivity:	Human
Format:	PE
Isotype:	Mouse IgG2b
Antibody Type:	Monoclonal
Formulation:	Phosphate-buffered solution, pH 7.2, containing 0.09% sodium azide and 0.2% (w/v) BSA
Protein Concentration:	Supplied at a lot-specific concentration.
Storage and Handling:	The antibody solution should be stored undiluted between 2°C and 8°C, and protected from prolonged exposure to light. Do not freeze.
Recommended Usage:	For flow cytometric staining, it is recommended to use 5 µL of this reagent per 0.5-1.0 million cells in a 100 µL volume. Optimal reagent performance should be determined by titration for each specific application. PE has an excitation max at 565 nm and an emission max at 575 nm.
Excitation Laser:	Blue Laser (488 nm) Green/Yellow laser (532/561nm)
Isotype Control:	301615

BACKGROUND INFORMATION

CD45RA is a 205-220 kDa isoform of the CD45 tyrosine phosphatase, expressed on naïve/resting T cells, medullary thymocytes, B cells, and monocytes. It is found on ~40-50% of peripheral CD4⁺ T cells, ~50% of CD8⁺ T cells, and subsets of B cells and monocytes. CD45RA enhances TCR and BCR signaling and associates with molecules like LPAP, CD1-CD4, and galectin-1. Its expression is regulated by cytokines and can be present on some activated T cells. CD45RA-specific antibodies (e.g., HI100) are widely used to identify naïve T cells and study CD4⁺ suppressor/inducer subsets.

PRODUCT DATA



Human peripheral blood lymphocytes stained with PE Anti-Human CD45RA clone HI100 (blue histogram) or an isotype control (gray histogram).

This product is supplied subject to the terms and conditions at www.innocyto.com/web/terms.php and may only be used as provided in the stated terms. Products are for Research Use Only.