

Technical Data Sheet

Biotin Anti-Mouse CD3

Catalog Number: 200103, 200104

Size: 25 ug, 100 ug

Target Name: CD3, T cell antigen receptor complex, T3

Regulatory Status: RUO

Product Details

Clone: KT3

Application: FC

Reactivity: Mouse

Format: Biotin

Isotype: Rat IgG2a

Antibody Type: Monoclonal

Formulation: Phosphate-buffered solution, pH 7.2, containing 0.09% sodium azide and 0.2% (w/v) BSA

Protein Concentration: 0.2 mg/mL

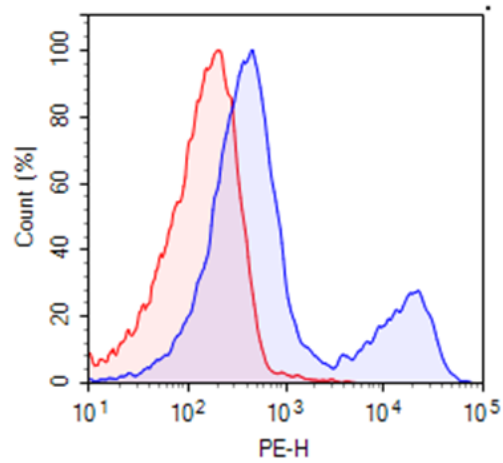
Storage and Handling: Store the antibody undiluted at 2°C to 8°C.

Recommended Usage: For flow cytometric staining, it is recommended to use less than 0.1 ug of this reagent per 0.5-1.0 million cells in a 100 µL volume. Optimal reagent performance should be determined by titration for each specific application.

Background Information

CD3 (cluster of differentiation 3) is a protein complex and T cell co-receptor that is involved in activating both the cytotoxic T cell (CD8+ naive T cells) and T helper cells (CD4+ naive T cells). CD3 is a member of the Ig superfamily and primarily expressed on T cells, NK-T cells, and at different levels on thymocytes during T cell differentiation. CD3 is composed of CD3 ϵ , δ , γ and ζ chains. It forms a TCR complex by associating with TCR $\alpha\beta$ or $\gamma\delta$ chains. CD3 plays a critical role in TCR signal transduction, T cell activation, and antigen recognition by binding the peptide/MHC antigen complex

Product Data



Mouse splenocytes stained with biotinylated Anti-Mouse CD3 clone KT3 (purple histogram) or an isotype control (red histogram), followed by SA-PE.