

## Technical Data Sheet

### iF488 Anti-Mouse CD3

**Catalog Number:** 200105, 200106  
**Size:** 25 tests, 100 tests  
**Target Name:** CD3, T cell antigen receptor complex, T3  
**Regulatory Status:** RUO

#### Product Details

---

**Clone:** KT3  
**Application:** FC  
**Reactivity:** Mouse  
**Format:** iF488  
**Isotype:** Rat IgG2a  
**Antibody Type:** Monoclonal  
**Formulation:** Phosphate-buffered solution, pH 7.2, containing 0.09% sodium azide and 0.2% (w/v) BSA  
**Protein Concentration:** Supplied at a lot-specific concentration.  
**Storage and Handling:** The antibody solution should be stored undiluted between 2°C and 8°C, and protected from prolonged exposure to light. Do not freeze.  
**Recommended Usage:** For flow cytometric staining, it is recommended to use 5 µL of this reagent per 0.5-1.0 million cells in a 100 µL volume. Optimal reagent performance should be determined by titration for each specific application.  
**Excitation Laser:** Blue Laser (488 nm)

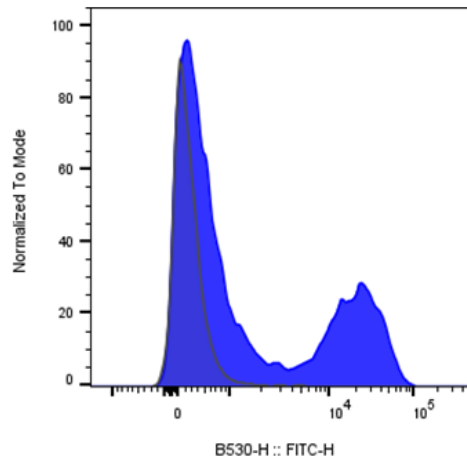
#### Background Information

---

CD3 (cluster of differentiation 3) is a protein complex and T cell co-receptor that is involved in activating both the cytotoxic T cell (CD8+ naive T cells) and T helper cells (CD4+ naive T cells). CD3 is a member of the Ig superfamily and primarily expressed on T cells, NK-T cells, and at different levels on thymocytes during T cell differentiation. CD3 is composed of CD3 $\epsilon$ ,  $\delta$ ,  $\gamma$  and  $\zeta$  chains. It forms a TCR complex by associating with TCR  $\alpha/\beta$  or  $\gamma/\delta$  chains. CD3 plays a critical role in TCR signal transduction, T cell activation, and antigen recognition by binding the peptide/MHC antigen complex

#### Product Data

---



Mouse splenocytes stained with iF488 Anti-Mouse CD3 clone KT3 (blue histogram) or an isotype control (gray histogram).