

iF488 Anti-Mouse H-2 Antibody

| | |
|---------------------------|---|
| Catalog Number: | 200305, 200306 |
| Size: | 25 tests, 100 tests |
| Target Name: | H-2, major histocompatibility complex (MHC) H-2 |
| Regulatory Status: | RUO |

PRODUCT DETAILS

| | |
|-------------------------------|---|
| Clone: | M1/42 |
| Application: | Flow Cytometry |
| Reactivity: | Mouse |
| Format: | iF488 |
| Isotype: | Rat IgG2a |
| Antibody Type: | Monoclonal |
| Formulation: | Phosphate-buffered solution, pH 7.2, containing 0.09% sodium azide and 0.2% (w/v) BSA |
| Protein Concentration: | Supplied at a lot-specific concentration. |
| Storage and Handling: | The antibody solution should be stored undiluted between 2°C and 8°C, and protected from prolonged exposure to light. Do not freeze. |
| Recommended Usage: | For flow cytometric staining, it is recommended to use 5 µL of this reagent per 0.5-1.0 million cells in a 100 µL volume. Optimal reagent performance should be determined by titration for each specific application. iF488 has an excitation max at 491 nm and an emission max at 516 nm. |
| Excitation Laser: | Blue Laser (488 nm) |
| Isotype Control: | 300202 |
| RRID: | AB_3738981 |

BACKGROUND INFORMATION

The mouse H-2 complex is the murine major histocompatibility complex (MHC), a highly polymorphic genomic region that plays a central role in adaptive immunity. Encoded on mouse chromosome 17, the H-2 complex governs antigen presentation to T lymphocytes and is essential for immune recognition of pathogens, tumors, and transplanted tissues. Through regulated expression of MHC class I and class II molecules, the H-2 complex enables the immune system to distinguish self from non-self and to mount appropriate cellular immune responses.

Structurally, the H-2 complex is divided into several regions, most notably the class I (H-2K, H-2D, and in some strains H-2L), class II (I-A and I-E), and class III regions. Class I H-2 molecules are composed of a polymorphic heavy α chain non-covalently associated with β 2-microglobulin, forming a peptide-binding groove that presents short endogenous peptides to CD8+ T cells. Class II H-2 molecules consist of polymorphic α and β chains that together form a peptide-binding cleft for longer peptides derived from

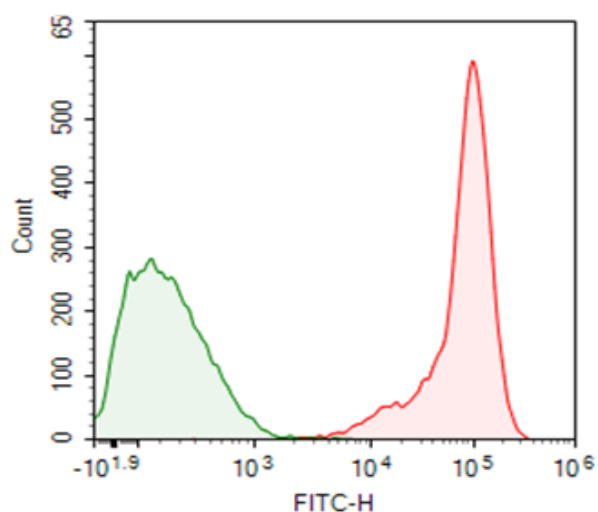
extracellular proteins, which are presented to CD4+ T cells. The class III region encodes several immune-related proteins, including complement components and cytokines, rather than antigen-presenting molecules.

The primary ligands for H-2 class I and class II molecules are peptide antigens generated by intracellular or extracellular antigen-processing pathways, respectively. Class I molecules bind peptides typically 8–10 amino acids in length, derived from cytosolic proteins processed by the proteasome, while class II molecules present longer peptides derived from endosomal and lysosomal processing of exogenous antigens. These peptide-MHC complexes are recognized by T cell receptors, forming the basis of antigen-specific T cell activation.

Variation within the H-2 complex has profound effects on disease susceptibility and immune outcomes in mice. Specific H-2 haplotypes are associated with resistance or susceptibility to infectious agents, autoimmune diseases, and cancer in experimental models. H-2 compatibility is also a dominant determinant of graft rejection in transplantation studies, making the complex a critical factor in experimental immunology. Differences in peptide-binding preferences among H-2 alleles influence T cell repertoire selection and immune response strength.

In therapy and biomedical research, the H-2 complex is indispensable for the development and interpretation of mouse models of human disease. It shapes responses to vaccines, immunotherapies, and infectious challenges in preclinical studies. Understanding H-2-restricted antigen presentation is also essential for designing mouse tumor models, evaluating T cell-based therapies, and translating immunological findings from mice to humans, underscoring the H-2 complex's foundational role in immunology.

PRODUCT DATA



Mouse splenocytes stained with iF488 Anti-Mouse H-2 clone M1_42 (red histogram) or an isotype control (green histogram).

This product is supplied subject to the terms and conditions at www.innocyto.com/web/terms.php and may only be used as provided in the stated terms. Products are for Research Use Only.