

Technical Data Sheet

PE Anti-Mouse CD8a

Catalog Number: 201009, 201010

Size: 25 tests, 100 tests

Target Name: CD8, CD8 alpha, T8, Lyt2, Ly-2

Regulatory Status: RUO

Product Details

Clone: 53-6.7

Application: FC

Reactivity: Mouse

Format: PE

Isotype: Rat IgG2a

Antibody Type: Monoclonal

Formulation: Phosphate-buffered solution, pH 7.2, containing 0.09% sodium azide and 0.2% (w/v) BSA

Protein Concentration: Supplied at a lot-specific concentration.

Storage and Handling: The antibody solution should be stored undiluted between 2°C and 8°C, and protected from prolonged exposure to light. Do not freeze.

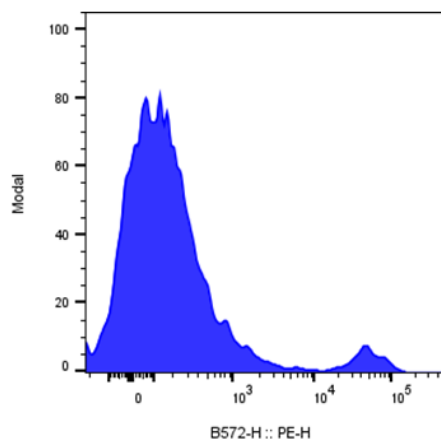
Recommended Usage: For flow cytometric staining, it is recommended to use 5 µL of this reagent per 0.5-1.0 million cells in a 100 µL volume. Optimal reagent performance should be determined by titration for each specific application.

Excitation Laser: Blue Laser (488 nm) Green/Yellow laser (532/561nm)

Background Information

CD8, also known as Lyt-2, Ly-2, or T8, is a cell surface glycoprotein that functions as a co-receptor for antigen recognition and T cell activation. It is typically expressed as a disulfide-linked heterodimer of CD8 α and CD8 β (CD8 $\alpha\beta$), though CD8 α can also form homodimers (CD8 $\alpha\alpha$). The CD8 α chain is an approximately 32–34 kDa protein of the immunoglobulin superfamily. CD8 $\alpha\beta$ heterodimers are expressed on most thymocytes and a subset of mature TCR $\alpha\beta$ T cells, while CD8 $\alpha\alpha$ homodimers are found on subsets of $\gamma\delta$ T cells, intestinal intraepithelial lymphocytes (IELs), NK cells, and some dendritic cells. CD8 binds to MHC class I molecules on antigen-presenting or target cells and, through its cytoplasmic domain association with the tyrosine kinase p56^{lck}, facilitates intracellular signaling events essential for T cell development, activation, and cytotoxic effector function. CD8⁺ cytotoxic T lymphocytes (CTLs) play a key role in eliminating virus-infected cells, tumor cells, and cells infected by intracellular pathogens.

Product Data



Mouse splenocytes stained with either with PE Anti-mouse CD8a clone 53-6.7 (blue histogram) or an isotype control (gray histogram).