

Technical Data Sheet

Anti-Human CD20

Catalog Number: 101301, 101302

Size: 100 ug, 500 ug

Target Name: CD20, MS4A-1

Regulatory Status: RUO

Product Details

Clone: 020AR1

Application: FC

Reactivity: Human

Format: Purified

Isotype: Rat IgG1

Antibody Type: Monoclonal

Formulation: Phosphate-buffered solution, pH 7.2, containing 0.09% sodium azide

Protein Concentration: 0.5 mg/mL

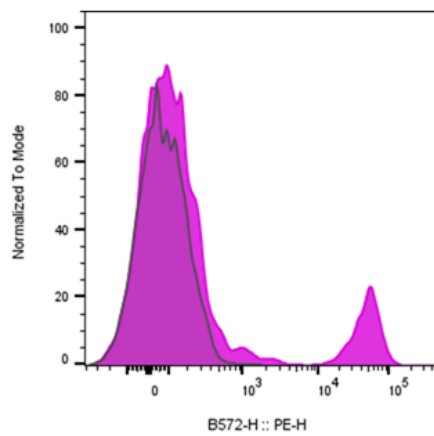
Storage and Handling: The antibody solution should be stored between 2°C and 8°C

Recommended Usage: For flow cytometric staining, it is recommended to use less than 0.25 ug of this reagent per 0.5-1.0 million cells in a 100 µL volume. Optimal reagent performance should be determined by titration for each specific application

Background Information

B-lymphocyte antigen CD20 or CD20 is expressed on the surface of all B-cells beginning at the pro-B phase (CD45R+, CD117+) and progressively increasing in concentration until maturity. expressed in B-cell lymphomas, hairy cell leukemia, and B-cell chronic lymphocytic leukemia. The protein has no known natural ligand[9] and its function is to enable optimal B-cell immune response, specifically against T-independent antigens.[10] It is suspected that it acts as a calcium channel in the cell membrane. CD20 has been linked to the signaling propensity of B-cell receptor (BCR).

Product Data



Human peripheral blood lymphocytes stained with either Anti-human CD20 clone 020AR1 (purple histogram) or an isotype control (gray histogram), followed by PE conjugated anti-rat IgG.