

## Technical Data Sheet

### iF488 Anti-Human CD20

**Catalog Number:** 101303, 101304

**Size:** 25 tests, 100 tests

**Target Name:** CD20, MS4A-1

**Regulatory Status:** RUO

#### Product Details

---

**Clone:** 020AR1

**Application:** FC

**Reactivity:** Human

**Format:** iF488

**Isotype:** Rat IgG1

**Antibody Type:** Monoclonal

**Formulation:** Phosphate-buffered solution, pH 7.2, containing 0.09% sodium azide and 0.2% (w/v) BSA

**Protein Concentration:** Supplied at a lot-specific concentration.

**Storage and Handling:** The antibody solution should be stored undiluted between 2°C and 8°C, and protected from prolonged exposure to light. Do not freeze.

**Recommended Usage:** For flow cytometric staining, it is recommended to use 5 µL of this reagent per 0.5-1.0 million cells in a 100 µL volume. Optimal reagent performance should be determined by titration for each specific application.

**Excitation Laser:** Blue Laser (488 nm)

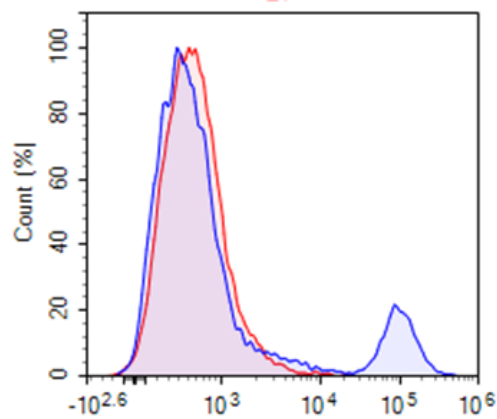
#### Background Information

---

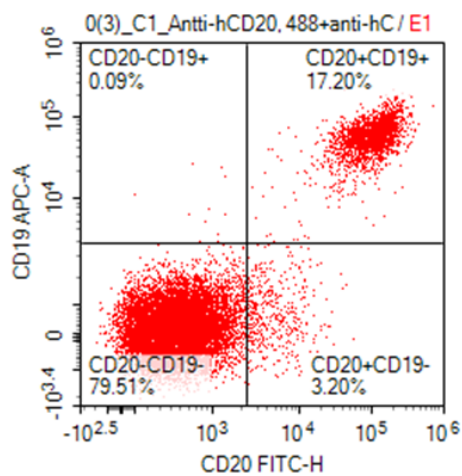
B-lymphocyte antigen CD20 or CD20 is expressed on the surface of all B-cells beginning at the pro-B phase (CD45R+, CD117+) and progressively increasing in concentration until maturity. expressed in B-cell lymphomas, hairy cell leukemia, and B-cell chronic lymphocytic leukemia. The protein has no known natural ligand[9] and its function is to enable optimal B-cell immune response, specifically against T-independent antigens.[10] It is suspected that it acts as a calcium channel in the cell membrane. CD20 has been linked to the signaling propensity of B-cell receptor (BCR).

#### Product Data

---



Human peripheral blood lymphocytes stained with iF488 anti-human CD20 clone 020AR1 or iF488 Rat IgG1 isotype control.



Human peripheral blood lymphocytes stained with iF488 anti-human CD20 clone 020AR1 and iF647 anti-human CD19 clone 019AM2b