

## Biotin Anti-His tag Antibody

<b>Catalog Number:</b>	300603, 300604
<b>Size:</b>	25 ug, 100 ug
<b>Target Name:</b>	His Tag, histidine-tag
<b>Regulatory Status:</b>	RUO

### PRODUCT DETAILS

---

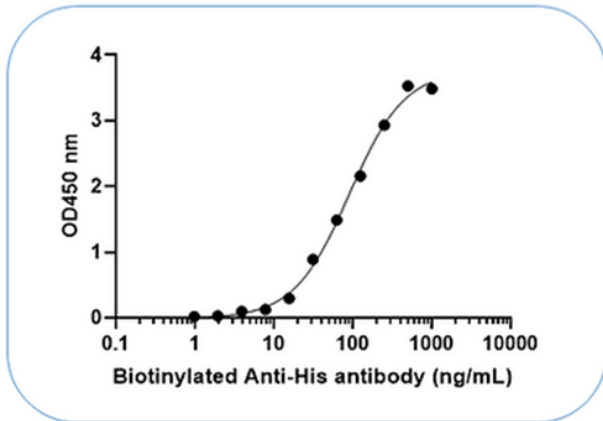
<b>Clone:</b>	BR20M03
<b>Application:</b>	ELISA, WB, Flow Cytometry
<b>Reactivity:</b>	His-tag, All Species Expected
<b>Format:</b>	Biotin
<b>Isotype:</b>	Mouse IgG1
<b>Antibody Type:</b>	Monoclonal
<b>Formulation:</b>	Phosphate-buffered solution, pH 7.2, containing 0.09% sodium azide and 0.2% (w/v) BSA
<b>Protein Concentration:</b>	0.2 mg/mL
<b>Storage and Handling:</b>	Quick spin the vial after receiving. The antibody solution should be stored undiluted between 2°C and 8°C, and protected from prolonged exposure to light. Do not freeze.
<b>Recommended Usage:</b>	For ELISA applications, this antibody can be used at 0.5-1.0 µg/mL as the detection antibody. However, optimization by titration is suggested for best performance in each specific application.
<b>Isotype Control:</b>	301425

### BACKGROUND INFORMATION

---

This antibody is raised against a synthetic 6xHis peptide. It can be used for Western blotting to detect His-tagged proteins (6xHis or more) at the N-terminus, C-terminus, or within the protein sequence. It is also suitable for flow cytometry or immunofluorescent staining of His-tagged proteins.

## PRODUCT DATA



Recombinant protein with His tag is coated at 50 ng<sub>mL</sub> (5 ng<sub>well</sub>). Biotin anti-His antibody can detect His tagged protein in the dose dependent manner. For ELISA application, this antibody can be used at 0.5-1.0 ug<sub>mL</sub> as the detection antibody.

This product is supplied subject to the terms and conditions at [www.innocyto.com/web/terms.php](http://www.innocyto.com/web/terms.php) and may only be used as provided in the stated terms. Products are for Research Use Only.