

Technical Data Sheet

Anti-c-Myc Antibody

Catalog Number: 300801, 300802

Size: 50 ug, 200 ug

Target Name: Myc tag, Myc epitope

Regulatory Status: RUO

Product Details

Clone: 9E10

Application: ELISA, WB, FC

Reactivity: Myc tag, All Species Expected

Format: Purified

Isotype: Mouse IgG1

Antibody Type: Monoclonal

Formulation: Phosphate-buffered solution, pH 7.2, containing 0.09% sodium azide

Protein Concentration: 0.5 mg/mL

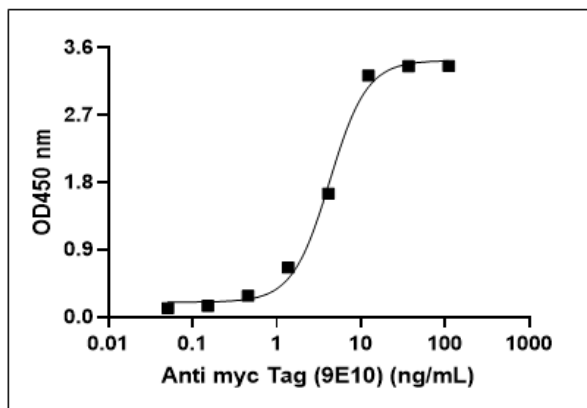
Storage and Handling: Quick spin the vial after receiving. The antibody solution should be stored between 2°C and 8°C without dilution.

Recommended Usage: For ELISA application, this antibody can be used at 0.05 ug/mL or lower as the detection antibody. However, optimization by titration is suggested for best performance in each specific application.

Background Information

The 9E10 monoclonal antibody was generated by immunizing mice with a synthetic peptide corresponding to amino acids 408–438 (E E Q K L I S E E D L L R K R R E Q L K H K L E Q L R N S C A) of the human c-Myc protein. It specifically recognizes the epitope EQKLISEEDL, a defined sequence within the human c-Myc protein

Product Data



Multi-tag protein (catalog 603901) is coated at 100ng_mL (10ng_well). Anti-c-Myc antibody (clone 9E10) can detect the Multi-tag protein in the dose dependent manner. For ELISA application, this antibody can be used at 0.05 ug_mL or lower as the detection antibody.