

Technical Data Sheet

iF488 Rat IgG2a Isotype control

Catalog Number: 300202

Size: 50 ug

Target Name: Rat IgG2a Isotype control

Regulatory Status: RUO

Product Details

Clone: RTK2758

Application: FC

Reactivity: N/A

Format: iF488

Isotype: Rat IgG2a

Antibody Type: Monoclonal

Formulation: Phosphate-buffered solution, pH 7.2, containing 0.09% sodium azide and 0.2% (w/v) BSA

Protein Concentration: This antibody is supplied at a lot-specific concentration.

Storage and Handling: The antibody solution should be stored undiluted between 2°C and 8°C, and protected from prolonged exposure to light. Do not freeze.

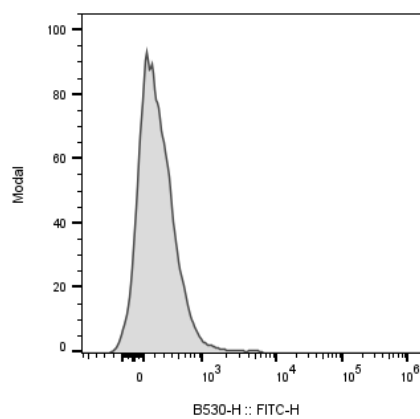
Recommended Usage: Use at concentrations comparable to those used for the target-specific antibody

Excitation Laser: Blue Laser (488 nm)

Background Information

The RTK2758 immunoglobulin reacts with KLH. The isotype of this antibody is rat IgG2a, ?. This antibody was chosen as an isotype control after screening on a variety of resting, activated, live, and fixed mouse, rat and human tissues.

Product Data



Mouse splenocytes stained with iF488 Rat IgG2a Isotype Control clone RTK2758 (gray histogram)