

## Technical Data Sheet

### FITC Rat IgG2a Isotype control

**Catalog Number:** 300204

**Size:** 50 ug

**Target Name:** Rat IgG2a Isotype control

**Regulatory Status:** RUO

#### Product Details

---

**Clone:** RTK2758

**Application:** FC

**Reactivity:** N/A

**Format:** FITC

**Isotype:** Rat IgG2a

**Antibody Type:** Monoclonal

**Formulation:** Phosphate-buffered solution, pH 7.2, containing 0.09% sodium azide and 0.2% (w/v) BSA

**Protein Concentration:** 0.2mg/mL

**Storage and Handling:** Store the antibody undiluted at 2°C to 8°C.

**Recommended Usage:** Use at concentrations comparable to those used for the target-specific antibody

**Excitation Laser:** Blue Laser (488 nm)

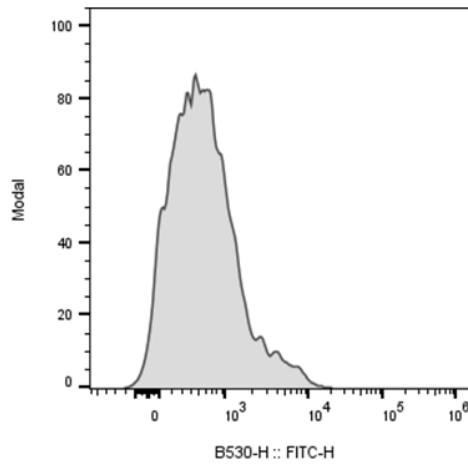
#### Background Information

---

The RTK2758 immunoglobulin reacts with KLH. The isotype of this antibody is rat IgG2a, ?. This antibody was chosen as an isotype control after screening on a variety of resting, activated, live, and fixed mouse, rat and human tissues.

#### Product Data

---



Mouse splenocytes stained with FITC Rat IgG2a Isotype Control clone RTK2758 (gray histogram)