

Technical Data Sheet

PE Rat IgG2a Isotype control

Catalog Number: 300205

Size: 50 ug

Target Name: Rat IgG2a Isotype control

Regulatory Status: RUO

Product Details

Clone: RTK2758

Application: FC

Reactivity: N/A

Format: PE

Isotype: Rat IgG2a

Antibody Type: Monoclonal

Formulation: Phosphate-buffered solution, pH 7.2, containing 0.09% sodium azide and 0.2% (w/v) BSA

Protein Concentration: Supplied at a lot-specific concentration.

Storage and Handling: The antibody solution should be stored undiluted between 2°C and 8°C, and protected from prolonged exposure to light. Do not freeze.

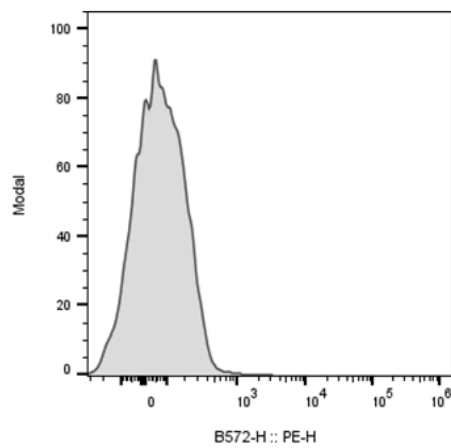
Recommended Usage: Use at concentrations comparable to those used for the target-specific antibody

Excitation Laser: Blue Laser (488 nm) Green/Yellow laser (532/561nm)

Background Information

The RTK2758 immunoglobulin reacts with KLH. The isotype of this antibody is rat IgG2a, ?. This antibody was chosen as an isotype control after screening on a variety of resting, activated, live, and fixed mouse, rat and human tissues.

Product Data



Mouse splenocytes stained with PE Rat IgG2a Isotype Control clone RTK2758 (gray histogram)