

## Technical Data Sheet

### PE Rat IgG2b Isotype control

**Catalog Number:** 300305

**Size:** 50 ug

**Target Name:** Rat IgG2b Isotype control

**Regulatory Status:** RUO

#### Product Details

---

**Clone:** RTK4530

**Application:** FC

**Reactivity:** N/A

**Format:** PE

**Isotype:** Rat IgG2b

**Antibody Type:** Monoclonal

**Formulation:** Phosphate-buffered solution, pH 7.2, containing 0.09% sodium azide and 0.2% (w/v) BSA

**Protein Concentration:** Supplied at a lot-specific concentration.

**Storage and Handling:** The antibody solution should be stored undiluted between 2°C and 8°C, and protected from prolonged exposure to light. Do not freeze.

**Recommended Usage:** Use at concentrations comparable to those used for the target-specific antibody

**Excitation Laser:** Blue Laser (488 nm) Green/Yellow laser (532/561nm)

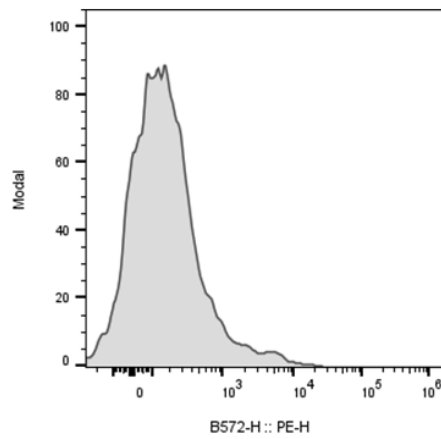
#### Background Information

---

The RTK4530 immunoglobulin reacts with KLH. The isotype of this antibody is rat IgG2b, ?. This antibody was chosen as an isotype control after screening on a variety of resting, activated, live, and fixed mouse, rat and human tissues.

#### Product Data

---



Mouse splenocytes stained with PE Rat IgG2b Isotype Control clone RTK4530 (gray histogram)