

## Technical Data Sheet

### FITC Human IgG1 isotype control

**Catalog Number:** 301205, 301206  
**Size:** 25 ug, 100 ug  
**Target Name:** Human IgG1 isotype control  
**Regulatory Status:** RUO

#### Product Details

---

**Clone:** 1016AH1  
**Application:** FC  
**Reactivity:** N/A  
**Format:** FITC  
**Isotype:** Human IgG1  
**Antibody Type:** Monoclonal  
**Formulation:** Phosphate-buffered solution, pH 7.2, containing 0.09% sodium azide and 0.2% (w/v) BSA  
**Protein Concentration:** 0.2 mg/mL  
**Storage and Handling:** The antibody solution should be stored undiluted between 2°C and 8°C, and protected from prolonged exposure to light. Do not freeze.  
**Recommended Usage:** Use at concentrations comparable to those used for the target-specific antibody  
**Excitation Laser:** Blue Laser (488 nm)

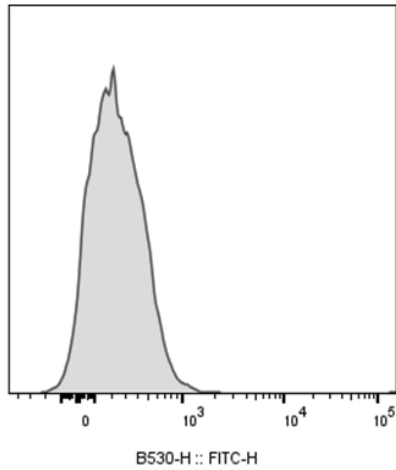
#### Background Information

---

There are four IgG subclasses (IgG1, 2, 3, and 4) in humans, named in order of their abundance in serum (IgG1 being the most abundant). The measurement of immunoglobulin G can be a diagnostic tool for certain conditions.

#### Product Data

---



Human peripheral blood lymphocytes stained with FITC human IgG 1 isotype control clone 1016AH1.