

PE Human IgG1 Isotype Control Antibody

Catalog Number:	301209, 301210
Size:	25 ug, 100 ug
Target Name:	Human IgG1 isotype control
Regulatory Status:	RUO

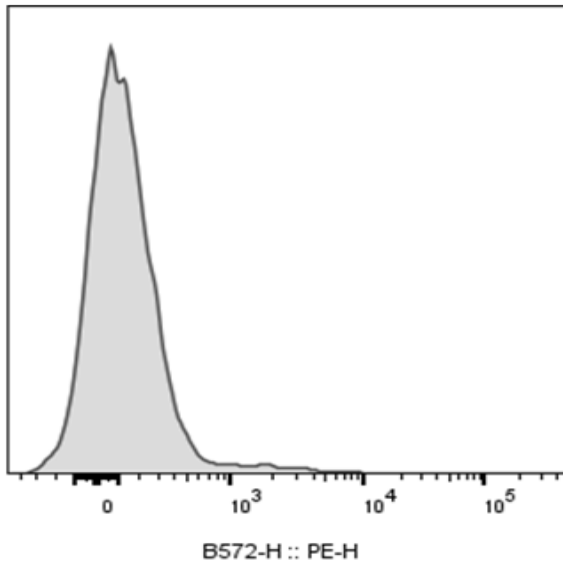
PRODUCT DETAILS

Clone:	1016AH1
Application:	Flow Cytometry
Reactivity:	N/A
Format:	PE
Isotype:	Human IgG1
Antibody Type:	Monoclonal
Formulation:	Phosphate-buffered solution, pH 7.2, containing 0.09% sodium azide and 0.2% (w/v) BSA
Protein Concentration:	0.2 mg/mL
Storage and Handling:	The antibody solution should be stored undiluted between 2°C and 8°C, and protected from prolonged exposure to light. Do not freeze.
Recommended Usage:	Use at concentrations comparable to those used for the target-specific antibody. PE has an excitation max at 565 nm and an emission max at 575 nm.
Excitation Laser:	Blue Laser (488 nm) Green/Yellow laser (532/561nm)
RRID:	AB_3739160

BACKGROUND INFORMATION

There are four IgG subclasses (IgG1, 2, 3, and 4) in humans, named in order of their abundance in serum (IgG1 being the most abundant). The measurement of immunoglobulin G can be a diagnostic tool for certain conditions.

PRODUCT DATA



Human peripheral blood lymphocytes stained with PE human IgG 1 isotype control clone 1016AH1.

This product is supplied subject to the terms and conditions at www.innocyto.com/web/terms.php and may only be used as provided in the stated terms. Products are for Research Use Only.