

## Technical Data Sheet

### iF488 Human IgG4 isotype control

**Catalog Number:** 301303, 301304

**Size:** 25 ug, 100 ug

**Target Name:** Human IgG4 isotype control

**Regulatory Status:** RUO

#### Product Details

---

**Clone:** 1016AH4

**Application:** FC

**Reactivity:** N/A

**Format:** iF488

**Isotype:** Human IgG4

**Antibody Type:** Monoclonal

**Formulation:** Phosphate-buffered solution, pH 7.2, containing 0.09% sodium azide and 0.2% (w/v) BSA

**Protein Concentration:** Supplied at a lot-specific concentration.

**Storage and Handling:** The antibody solution should be stored undiluted between 2°C and 8°C, and protected from prolonged exposure to light. Do not freeze.

**Recommended Usage:** Use at concentrations comparable to those used for the target-specific antibody

**Excitation Laser:** Blue Laser (488 nm)

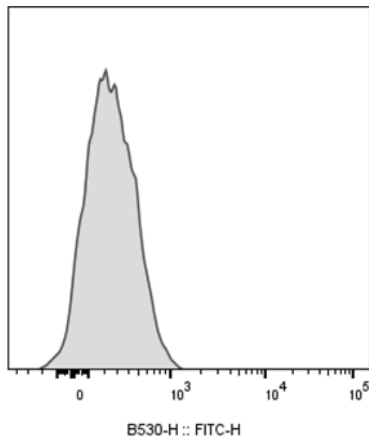
#### Background Information

---

There are four IgG subclasses (IgG1, 2, 3, and 4) in humans, named in order of their abundance in serum (IgG1 being the most abundant). The measurement of immunoglobulin G can be a diagnostic tool for certain conditions.

#### Product Data

---



Human peripheral blood lymphocytes stained with iF488 Human IgG4 isotype control clone 1016AH4.