

## Technical Data Sheet

### Biotin Anti-Human CD28

**Catalog Number:** 101507, 101508

**Size:** 25 ug, 100 ug

**Target Name:** CD28, Tp44

**Regulatory Status:** RUO

#### Product Details

---

**Clone:** 028AB

**Application:** FC

**Reactivity:** Human

**Format:** Biotin

**Isotype:** Rabbit IgG

**Antibody Type:** Monoclonal

**Formulation:** Phosphate-buffered solution, pH 7.2, containing 0.09% sodium azide and 0.2% (w/v) BSA

**Protein Concentration:** 0.2 mg/mL

**Storage and Handling:** The antibody solution should be stored undiluted between 2°C and 8°C, and protected from prolonged exposure to light. Do not freeze.

**Recommended Usage:** For flow cytometric staining, it is recommended to use less than 0.1 ug of this reagent per 0.5-1.0 million cells in a 100 µL volume. Optimal reagent performance should be determined by titration for each specific application

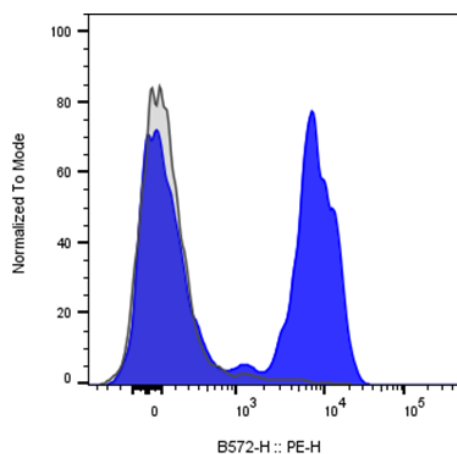
#### Background Information

---

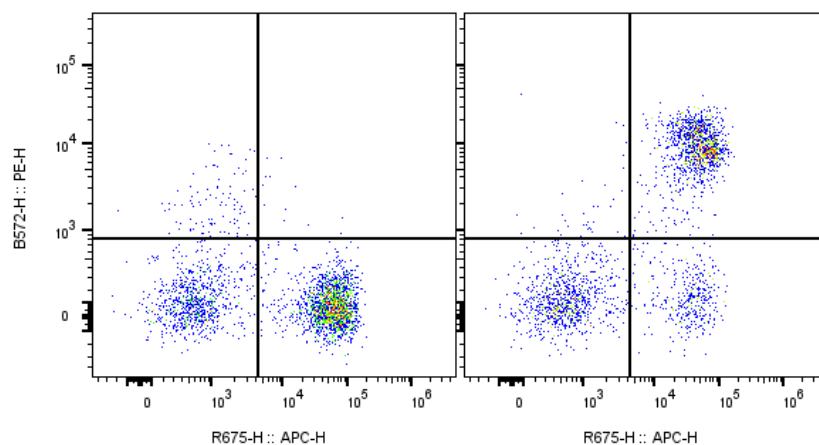
CD28 (Cluster of Differentiation 28) is one of the proteins expressed on T cells that provide co-stimulatory signals required for T cell activation and survival. T cell stimulation through CD28 in addition to the T-cell receptor (TCR) can provide a potent signal for the production of various interleukins (IL-6 in particular). CD28 is the only B7 receptor constitutively expressed on naive T cells. Association of the TCR of a naive T cell with MHC antigen complex without CD28:B7 interaction results in a T cell that is anergic.

#### Product Data

---



Human peripheral blood lymphocytes stained with biotinylated anti-human CD28 clone 028AB (blue histogram) or an isotype control (gray histogram), followed by SA-PE.



Human peripheral blood lymphocytes stained with anti-Human CD3 iF647 (APC) and biotinylated anti-human CD28 clone 028AB (right panel) or an isotype control (left panel), followed by SA-PE.