

Technical Data Sheet

iF647 Human IgG4 isotype control

Catalog Number: 301307, 301308

Size: 25 ug, 100 ug

Target Name: Human IgG4 isotype control

Regulatory Status: RUO

Product Details

Clone: 1016AH4

Application: FC

Reactivity: N/A

Format: iF647

Isotype: Human IgG4

Antibody Type: Monoclonal

Formulation: Phosphate-buffered solution, pH 7.2, containing 0.09% sodium azide and 0.2% (w/v) BSA

Protein Concentration: Supplied at a lot-specific concentration.

Storage and Handling: The antibody solution should be stored undiluted between 2°C and 8°C, and protected from prolonged exposure to light. Do not freeze.

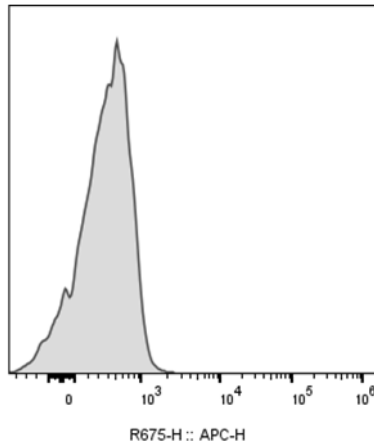
Recommended Usage: Use at concentrations comparable to those used for the target-specific antibody

Excitation Laser: Red Laser (633 nm)

Background Information

There are four IgG subclasses (IgG1, 2, 3, and 4) in humans, named in order of their abundance in serum (IgG1 being the most abundant). The measurement of immunoglobulin G can be a diagnostic tool for certain conditions.

Product Data



Human peripheral blood lymphocytes stained with iF647 Human IgG4 isotype control clone 1016AH4.