

FITC Mouse IgG1 Isotype Control Antibody

Catalog Number:	301415, 301416
Size:	25 ug, 100 ug
Target Name:	Mouse IgG1 Isotype Control
Regulatory Status:	RUO

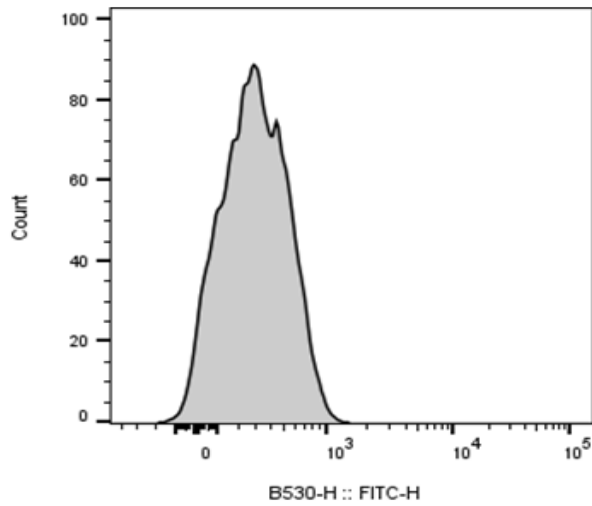
PRODUCT DETAILS

Clone:	MOPC-21
Application:	Flow Cytometry
Reactivity:	N/A
Format:	FITC
Isotype:	Mouse IgG1
Antibody Type:	Monoclonal
Formulation:	Phosphate-buffered solution, pH 7.2, containing 0.09% sodium azide and 0.2% (w/v) BSA
Protein Concentration:	0.2mg/mL
Storage and Handling:	The antibody solution should be stored undiluted between 2°C and 8°C, and protected from prolonged exposure to light. Do not freeze.
Recommended Usage:	Use at concentrations comparable to those used for the target-specific antibody. FITC has an excitation max at 493 nm and an emission max at 525 nm.
Excitation Laser:	Blue Laser (488 nm)
RRID:	AB_3739180

BACKGROUND INFORMATION

The clone of MOPC-21 antibody is mouse isotype IgG1, k. The MOPC-21 immunoglobulin has unknown specificity. It is chosen as an isotype control after screening on a variety of resting, activated, live, and fixed mouse, rat and human tissues.

PRODUCT DATA



Mouse splenocytes stained with FITC Mouse IgG1 Isotype Control clone MOPC-21 (gray histogram).

This product is supplied subject to the terms and conditions at www.innocyto.com/web/terms.php and may only be used as provided in the stated terms. Products are for Research Use Only.