

## Technical Data Sheet

### Mouse IgG2b Isotype Control

**Catalog Number:** 301601, 301602  
**Size:** 100 ug, 500 ug  
**Target Name:** Mouse IgG2b Isotype Control  
**Regulatory Status:** RUO

#### Product Details

---

**Clone:** MOPC-21-2b  
**Application:** FC  
**Reactivity:** N/A  
**Format:** Purified  
**Isotype:** Mouse IgG2b  
**Antibody Type:** Monoclonal  
**Formulation:** Phosphate-buffered solution, pH 7.2, containing 0.09% sodium azide  
**Protein Concentration:** 0.5 mg/mL  
**Storage and Handling:** Store the antibody undiluted at 2°C to 8°C.  
**Recommended Usage:** Use at concentrations comparable to those used for the target-specific antibody

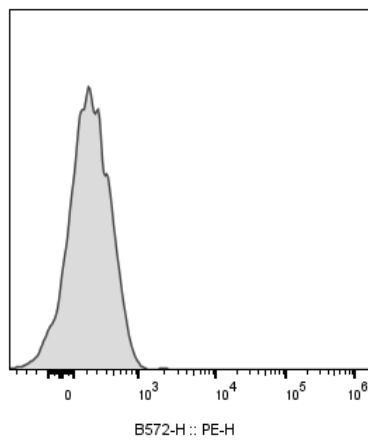
#### Background Information

---

This antibody is a clone of the MOPC-21 variable region with a Mouse IgG2b, kappa isotype. MOPC-21 immunoglobulin has an unknown antigen specificity and is commonly used as an isotype control. It was selected based on screening across a variety of resting and activated cells, as well as live and fixed tissues from mouse, rat, and human sources.

#### Product Data

---



Human peripheral blood lymphocytes stained either with purified mouse IgG2b isotype control clone MOPC-21-2b, followed by PE anti-mouse IgG.