

## Technical Data Sheet

### FITC Rabbit IgG, $\kappa$ 2 Isotype Control

**Catalog Number:** 301807, 301808

**Size:** 25 ug, 100 ug

**Target Name:** Rabbit IgG,  $\kappa$ 2 Isotype Control

**Regulatory Status:** RUO

#### Product Details

---

**Clone:** MOPC-21-B2

**Application:** FC

**Reactivity:** N/A

**Format:** FITC

**Isotype:** Rabbit IgG,  $\kappa$ 2

**Antibody Type:** Monoclonal

**Formulation:** Phosphate-buffered solution, pH 7.2, containing 0.09% sodium azide and 0.2% (w/v) BSA

**Protein Concentration:** 0.2mg/mL

**Storage and Handling:** The antibody solution should be stored undiluted between 2°C and 8°C, and protected from prolonged exposure to light. Do not freeze.

**Recommended Usage:** Use at concentrations comparable to those used for the target-specific antibody

**Excitation Laser:** Blue Laser (488 nm)

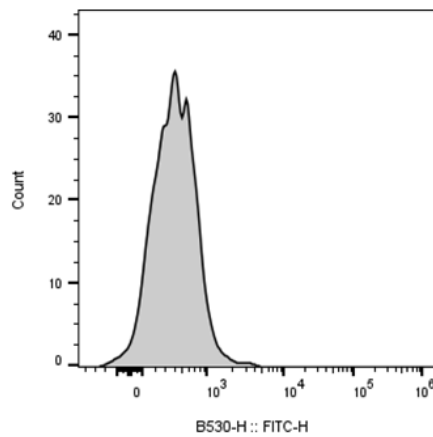
#### Background Information

---

This antibody is a clone of the MOPC-21 variable region with a rabbit IgG,  $\kappa$ 2 isotype. MOPC-21 immunoglobulin has an unknown antigen specificity and is commonly used as an isotype control. It was selected based on screening across a variety of resting and activated cells, as well as live and fixed tissues from mouse, rat, and human sources.

#### Product Data

---



Mouse splenocytes stained with FITC Rabbit IgG, k2 Isotype Control clone MOPC-21-B2 (gray histogram).