

FITC Rabbit IgG, κ 2 Isotype Control Antibody

Catalog Number:	301807, 301808
Size:	25 ug, 100 ug
Target Name:	Rabbit IgG, κ 2 Isotype Control
Regulatory Status:	RUO

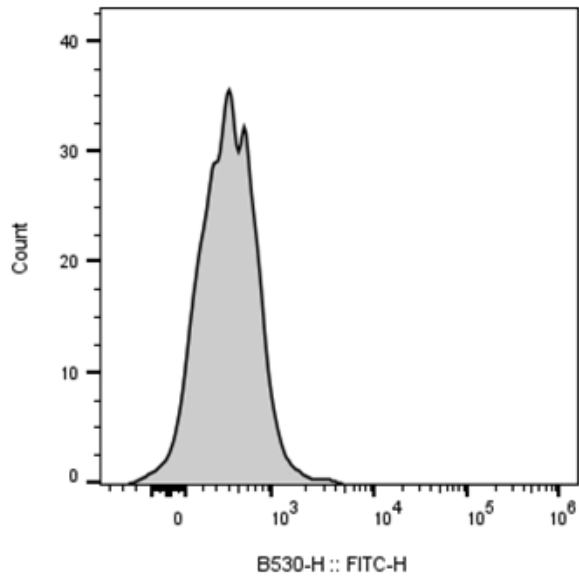
PRODUCT DETAILS

Clone:	MOPC-21-B2
Application:	Flow Cytometry
Reactivity:	N/A
Format:	FITC
Isotype:	Rabbit IgG, κ 2
Antibody Type:	Monoclonal
Formulation:	Phosphate-buffered solution, pH 7.2, containing 0.09% sodium azide and 0.2% (w/v) BSA
Protein Concentration:	0.2mg/mL
Storage and Handling:	The antibody solution should be stored undiluted between 2°C and 8°C, and protected from prolonged exposure to light. Do not freeze.
Recommended Usage:	Use at concentrations comparable to those used for the target-specific antibody. FITC has an excitation max at 493 nm and an emission max at 525 nm.
Excitation Laser:	Blue Laser (488 nm)

BACKGROUND INFORMATION

This antibody is a clone of the MOPC-21 variable region with a rabbit IgG, κ 2 isotype. MOPC-21 immunoglobulin has an unknown antigen specificity and is commonly used as an isotype control. It was selected based on screening across a variety of resting and activated cells, as well as live and fixed tissues from mouse, rat, and human sources.

PRODUCT DATA



Mouse splenocytes stained with FITC Rabbit IgG, k2 Isotype Control clone MOPC-21-B2 (gray histogram).

This product is supplied subject to the terms and conditions at www.innocyto.com/web/terms.php and may only be used as provided in the stated terms. Products are for Research Use Only.