

Technical Data Sheet

Anti-Human HLA-DR

Catalog Number: 102701, 102702

Size: 100 ug, 500 ug

Target Name: HLA-DR, Major Histocompatibility Class II, MHC class II

Regulatory Status: RUO

Product Details

Clone: L243

Application: FC

Reactivity: Human

Format: Purified

Isotype: Mouse IgG2a

Antibody Type: Monoclonal

Formulation: Phosphate-buffered solution, pH 7.2, containing 0.09% sodium azide

Protein Concentration: 0.5 mg/mL

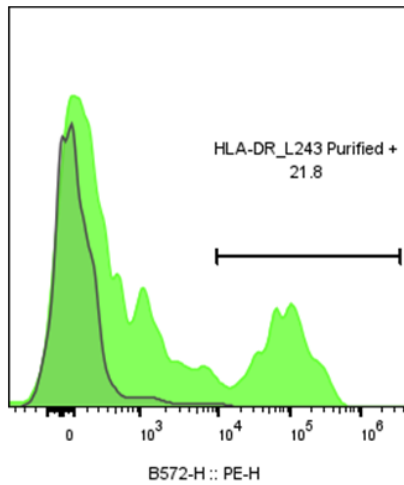
Storage and Handling: The antibody solution should be stored between 2°C and 8°C

Recommended Usage: For flow cytometric staining, it is recommended to use less than 0.5 ug of this reagent per 0.5-1.0 million cells in a 100 µL volume. Optimal reagent performance should be determined by titration for each specific application

Background Information

HLA-DR is a heterodimeric cell surface glycoprotein comprised of a 36 kD ? (heavy) chain and a 27 kD ? (light) chain. It is expressed on B cells, activated T cells, monocytes/macrophages, dendritic cells, and other non-professional APCs. In conjunction with the CD3/TCR complex and CD4 molecules, HLA-DR is critical for efficient peptide presentation to CD4+ T cells.

Product Data



Human peripheral blood lymphocytes stained either with purified Anti-Human HLA-DR clone L243 (green histogram) or an isotype control (gray histogram), followed by PE anti-mouse IgG 2nd antibody.