

## Biotin Human PD-L1 (CD274) Protein (C-His-Avi)

<b>Catalog Number:</b>	800703, 800704
<b>Size:</b>	25 ug, 100 ug
<b>Target Name:</b>	PD-L1, CD274, B7-H1, PDCD1L1, PDCD1LG1,
<b>Regulatory Status:</b>	RUO

### PRODUCT DETAILS

---

<b>Application:</b>	ELISA, BLI
<b>Format:</b>	Liquid, Biotinylated
<b>Expression Host:</b>	HEK293
<b>Species:</b>	Human
<b>Sources:</b>	Recombinant Human PD-L1 (Phe19-Thr239) with C-terminus His tag & Avi tag is expressed in HEK293 cells. This protein was site-specifically labeled with Biotin by BirA ligase.
<b>Accession Number:</b>	Q9NZQ7
<b>Molecular Weight:</b>	The protein has a predicted molecular weight of 28 kDa and migrates at approximately 35 kDa on SDS-PAGE under DTT-reducing conditions. This protein was site-specifically labeled with Biotin by BirA ligase.
<b>Affinity Tag:</b>	C-His-Avi
<b>Purity:</b>	>95% based on SDS-PAGE under reducing condition
<b>Formulation:</b>	1xPBS buffer, pH7.4, 0.22 µm filtered
<b>Endotoxin level:</b>	Not tested
<b>Protein Concentration:</b>	25µg size is bottled at 0.2mg/mL concentration. 100 µg size is supplied at a lot-specific concentration.
<b>Storage and Handling:</b>	Briefly centrifuge the vial upon receipt. An unopened vial can be stored at 4°C for up to 2 weeks, or at -20°C or below for up to six months. The protein may be further diluted to 0.1 mg/mL using 0.22 µm-filtered PBS buffer (pH 7.4). For long-term storage, the diluted stock solution should be aliquoted and stored at ≤ -70°C to minimize freeze-thaw cycles. If additional dilution is required, carrier proteins such as FBS or BSA should be added to maintain protein stability.

### BACKGROUND INFORMATION

---

Programmed death-ligand 1 (PD-L1), also known as CD274 or B7-H1, is a transmembrane protein that plays a pivotal role in immune regulation by modulating T cell activity. PD-L1 is expressed on a wide range of cells, including antigen-presenting cells, epithelial cells, and many tumor cells. Its primary function is to bind to its receptor, programmed cell death protein 1 (PD-1), located on activated T cells. This interaction delivers an inhibitory signal that reduces T cell proliferation, cytokine production, and cytotoxicity, thereby maintaining immune homeostasis and preventing autoimmunity. However, in pathological contexts such as

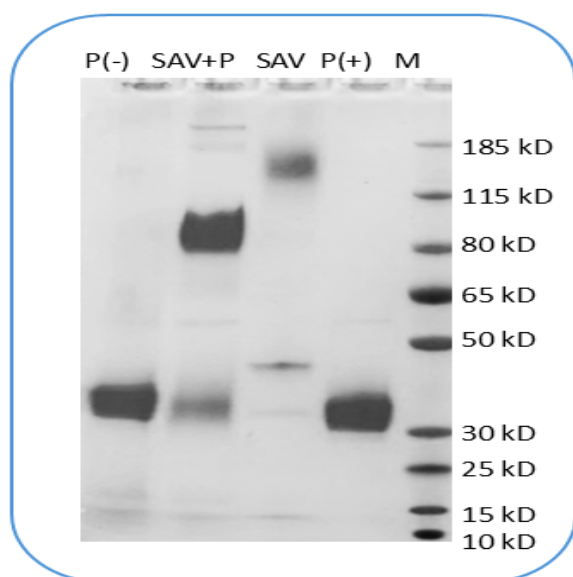
cancer, PD-L1 expression allows tumor cells to evade immune attack, creating an immunosuppressive microenvironment.

Structurally, PD-L1 is a type I transmembrane glycoprotein belonging to the B7 family of immune checkpoint molecules. The extracellular domain comprises two immunoglobulin-like regions—an IgV-like domain responsible for PD-1 binding and an IgC-like domain that stabilizes the molecule. The protein also contains a single transmembrane helix and a short cytoplasmic tail that lacks classical signaling motifs but may interact with intracellular partners influencing its stability and localization. The PD-L1-PD-1 complex adopts a well-characterized interface where the IgV domains of both molecules interact in a way that blocks T cell receptor-mediated activation signaling.

The main ligands of PD-L1 are PD-1 and CD80 (B7-1). While PD-1 engagement results in T cell inhibition, interaction with CD80 may yield bidirectional signaling effects depending on the cellular context. PD-L1 can be induced by inflammatory cytokines such as interferon-gamma (IFN- $\gamma$ ), linking innate immune responses to immune checkpoint modulation.

PD-L1 plays a major role in numerous diseases. Overexpression of PD-L1 is a hallmark of many cancers, including lung, melanoma, renal, and breast cancers, where it contributes to immune escape. Therapeutically, blocking the PD-1/PD-L1 axis with immune checkpoint inhibitors has revolutionized cancer treatment. Drugs such as pembrolizumab, nivolumab, and atezolizumab disrupt this inhibitory pathway, restoring antitumor T cell function. Moreover, PD-L1 is being explored as both a predictive biomarker for immunotherapy response and a target for novel therapies, including bispecific antibodies and CAR-T cells aimed at enhancing immune-mediated tumor clearance.

## PRODUCT DATA



Human PD-L1 (C-His-Avi) was biotinylated in vitro using BirA ligase. SDS-PAGE analysis under reducing (P+) and non-reducing (P-) conditions shows the protein has a purity greater than 95%. A gel shift assay using co-incubation with streptavidin indicates that the biotinylation efficiency of the PD-L1 protein exceeds 85%.

This product is supplied subject to the terms and conditions at [www.innocyto.com/web/terms.php](http://www.innocyto.com/web/terms.php) and may only be used as provided in the stated terms. Products are for Research Use Only.