

Technical Data Sheet

APC Conjugated Human PD-L1 Protein (C-Fc)

Catalog Number: 801103, 801104

Size: 25 ug, 100 ug

Target Name: PD-L1, CD274, B7-H1, PDCD1L1, PDCD1LG1,

Regulatory Status: RUO

Product Details

Application: FC

Format: Liquid, APC

Expression Host: HEK293

Species: Human

Sources: Recombinant Human PD-L1 (Phe19-Thr239) with C-terminus Fc tag is expressed in HEK293 cells and conjugated to APC.

Accession Number: Q9NZQ7

Molecular Weight: The protein has a predicted molecular weight of 54kDa. Under DTT-reducing conditions, it migrates at approximately 70 kDa on SDS-PAGE prior to conjugation.

Affinity Tag: C-Fc

Formulation: 1xPBS buffer, pH7.4, 0.09% NaN₃ with a carrier protein

Endotoxin level: Not tested

Protein Concentration: 25µg size is bottled at 0.1mg/mL concentration. 100 µg size is bottled at lot specific concentration.

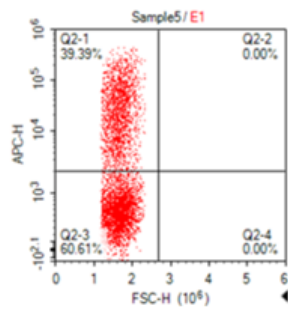
Storage and Handling: Briefly centrifuge the vial upon receipt. An unopened vial may be stored at 2–8°C for up to six months.

Background Information

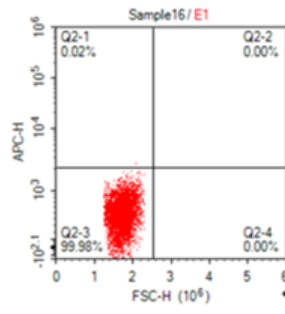
Programmed death-ligand 1 (PD-L1, also known as CD274 or B7-H1) is a type I transmembrane glycoprotein and a key immune checkpoint molecule in the B7 family. It is broadly expressed on immune cells (such as T cells, B cells, macrophages, and dendritic cells) and in various tissues, as well as on many tumor types. PD-L1 interacts with its receptor PD-1, expressed on activated T and B cells, to deliver inhibitory signals that suppress T cell proliferation, cytokine production, and cytolytic function. This interaction plays a critical role in maintaining immune homeostasis, preventing autoimmunity, and enabling immune evasion by tumors. Therapeutic antibodies targeting PD-L1 or PD-1 have shown significant clinical benefit in cancer immunotherapy by restoring T cell activity. PD-L1 is also implicated in tolerance during pregnancy, chronic infections, and transplantation. It contains two extracellular Ig-like domains, and its expression can be induced by inflammatory cytokines such as IFN- γ .

Product Data

A: PD-L1 CAR-transfected CHO Cells



B: Mock-transfected CHO Cells



CHO cells transfected with either PD-L1 CAR or Mock plasmid were stained with APC conjugated PD-L1 Fc protein at 4ug_test