

Technical Data Sheet

Human Mesothelin (E296-G580) Protein (C-His)

Catalog Number: 801501, 801502
Size: 25 ug, 100 ug
Target Name: Mesothelin, MPF, MSLN
Regulatory Status: RUO

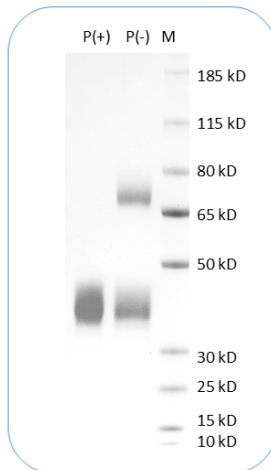
Product Details

Application: ELISA, BLI
Format: Liquid, Purified
Expression Host: HEK293
Species: Human
Sources: Human Mesothelin protein (Accession # AAH09272.1) (Glu296-Gly580) with C-terminus His tag is expressed in HEK293 cells.
Accession Number: Q13421
Molecular Weight: The protein has a predicted molecular weight of 34kDa. Under DTT-reducing conditions, it migrates at approximately 35-45 kDa.
Affinity Tag: C-His
Purity: >95% based on SDS-PAGE under reducing condition
Formulation: 1xPBS buffer, pH7.4, 0.22 μ m filtered
Endotoxin level: Not tested
Protein Concentration: 25 μ g size is bottled at 0.2mg/mL concentration. 100 μ g size is supplied at a lot-specific concentration.
Storage and Handling: Briefly centrifuge the vial upon receipt. An unopened vial can be stored at 4°C for up to 2 weeks, or at -20°C or below for up to six months. The protein may be further diluted to 0.1 mg/mL using 0.22 μ m-filtered PBS buffer (pH 7.4). For long-term storage, the diluted stock solution should be aliquoted and stored at $\leq -70^{\circ}\text{C}$ to minimize freeze-thaw cycles. If additional dilution is required, carrier proteins such as FBS or BSA should be added to maintain protein stability.

Background Information

Mesothelin (MSLN), also known as CAK1, is a 70 kDa cell-surface protein cleaved into MPF (30 kDa) and mesothelin (40 kDa). MPF acts as a cytokine, while mesothelin is membrane-bound via glycosylphosphatidylinositol. It is overexpressed in various cancers, including mesotheliomas and ovarian cancer, and interacts with MUC16/CA-125, a cancer biomarker. Elevated mesothelin levels in serum make it a target for diagnostics and therapies, such as the recombinant immunotoxin SS1P, which has shown promise in clinical trials.

Product Data



Human Mesothelin (E296-G580) Protein (C-His) on SDS-PAGE under reducing condition. The gel was stained for 1 hour with BlinkBlue (catalog 700102). The purity of this protein appears to be greater than 95%.